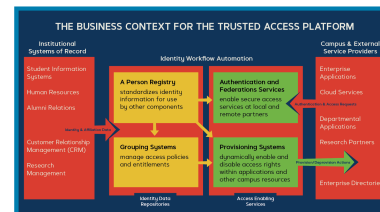


InCommon Trusted Access Platform Library

The InCommon Trusted Access Platform is an identity and access management suite of software designed to integrate with existing systems. The software is packaged to simplify your installation and configuration so it's easy for you to get started.



[help A note about TIER](#)

Jump to:

The InCommon Trusted Access Platform is an identity and access management suite of software designed to integrate with existing systems. The software is packaged to simplify your installation and configuration so it's easy for you to get started. | [Get Started](#) | [Get Training & More](#) | [Deployment Guides](#) | [For Developers](#) | [What's New in the Library?](#) | [Overall Architecture](#) | [Trusted Access Platform Component Wikis](#)

Get Started

[workbox Looking for Assistance from an IAM Catalyst Partner?](#)

[workbox Overview of the InCommon Trusted Access Platform](#)

[configure Download the Software](#)

[view TIER Reference Implementation Overview](#)

- [COmanage Docker Reference Implementation](#)
- [Grouper Docker Reference Implementation](#)
- [Shibboleth Docker Reference Implementation](#)
- [midPoint Docker Reference Implementation](#)

[help Get Help help Get Connected](#)

You can request to join the Slack channels for Shibboleth, Grouper, COmanage, or midPoint from the [Help page](#)

[user Join the Software Integration Working Group](#)

[email Subscribe to the Software Integration email list](#)

[email Subscribe to the InCommon midPoint email list](#)

[workbox Visit the InCommon website](#)

Get Training & More

[workbox InCommon Academy](#)

[success InCommon Collaboration Success Program](#)

Deployment Guides

[success Grouper Deployment Guide](#)

[workbox Complex midPoint Integration demo](#)

[workbox COmanage midPoint Integration Approaches](#)

What's New in the Library?

Note that some pages are for administrative purposes and may not be visible to all users

[InCommon Trusted Access Platform Release](#)

Apr 17, 2024 • updated by [Paul Caskey \(internet2.edu\)](#) • [view change](#)

[InCommon Trusted Access Platform Release](#)

Feb 28, 2024 • updated by [Chris Hubing \(internet2.edu\)](#) • [view change](#)

[InCommon Trusted Access Platform Release](#)

Dec 12, 2023 • updated by [Shayna Atkinson](#) • [view change](#)

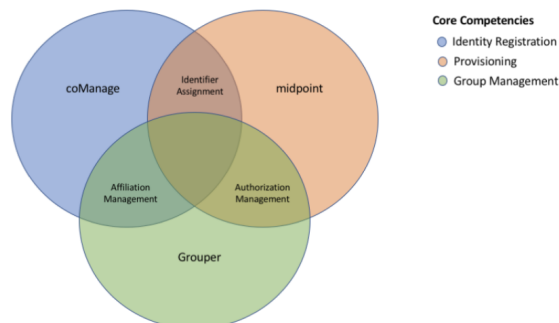
Overall Architecture

[workbox Functions of an Ideal IAM System](#)

[workbox The TIER Reference Architecture \(RA\)](#)

[workbox TIER Reference Architecture with Integration Detail](#)

[workbox TIER Provisioning Fit/Gap worksheet](#)



Get Training & More

[workbox InCommon Academy](#)

[success InCommon Collaboration Success Program](#)

Deployment Guides

[success Grouper Deployment Guide](#)

[workbox Complex midPoint Integration demo](#)

[workbox COmanage midPoint Integration Approaches](#)

[workbox Minimal/Thin Entity Registry](#)

[workbox Identity Onboarding](#)

[workbox TIER Docker Container Specification](#)

[workbox The Landscape of DevOps within TIER](#)

[workbox IAM Glossary of Terms](#)

Trusted Access Platform Component Wikis

For Developers

[workbox Docker Container Overview](#)

[workbox The Landscape of DevOps](#)

[workbox Shibboleth](#)

[workbox Shibboleth Metadata Management GUI](#)

[workbox Grouper](#)

[workbox COnanage Registry](#)

[workbox midPoint](#)

[workbox COnanage Match](#)