

Registry Enrollment (Rev 1, Registry 0.9.3 and earlier)



This page provides a detailed explanation of Registry Enrollment for versions up to (and including) v0.9.3. For information on Registry Enrollment in newer versions, see [Registry Enrollment \(Rev 2, Registry 0.9.4 and later\)](#). For information on configuring enrollment, see [Registry Enrollment Flow Configuration](#).

By default, COmanage Registry uses an invitation based enrollment flow.

However, COmanage Registry Enrollment can be customized. It is controlled by two configurations:

- [CMP Enrollment Configuration](#) manages platform-wide (ie: across all COs managed by a given COmanage Registry installation) enrollment configuration, generally related to the process of making Organizational Identities, which must be consistent across the platform (it would be remarkably confusing to have per-CO configurations for organizational identity), known to the COmanage Registry. Only the CMP Administrators can adjust the CMP Enrollment Configuration.
- [CO Enrollment Flows](#) manage CO-level enrollment configuration, and are constrained by the CMP Enrollment Configuration. A CO can have more than one Enrollment Flow active at any given time.

See also the [Registry Data Model](#) overview.

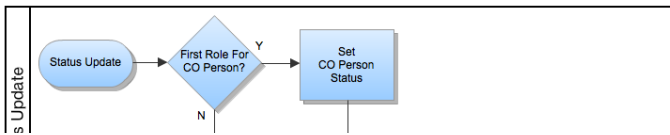
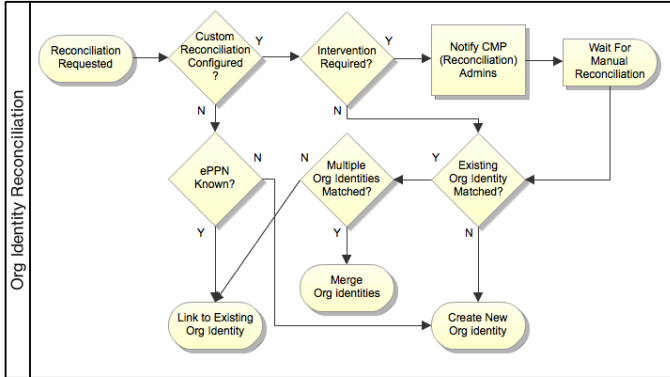
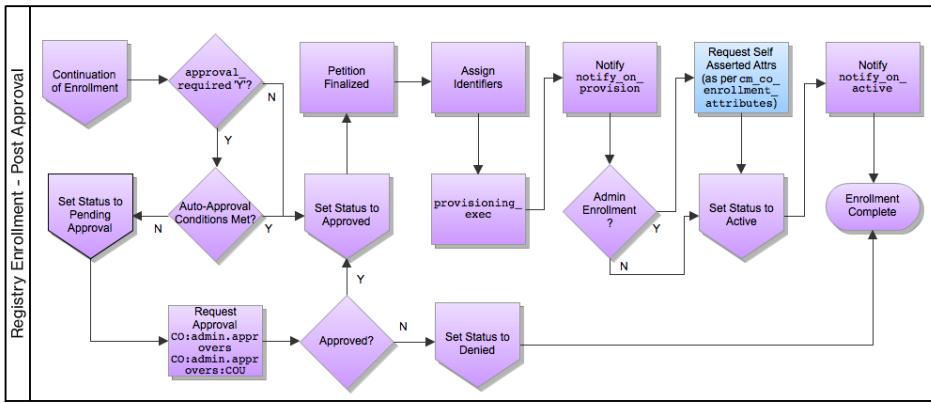
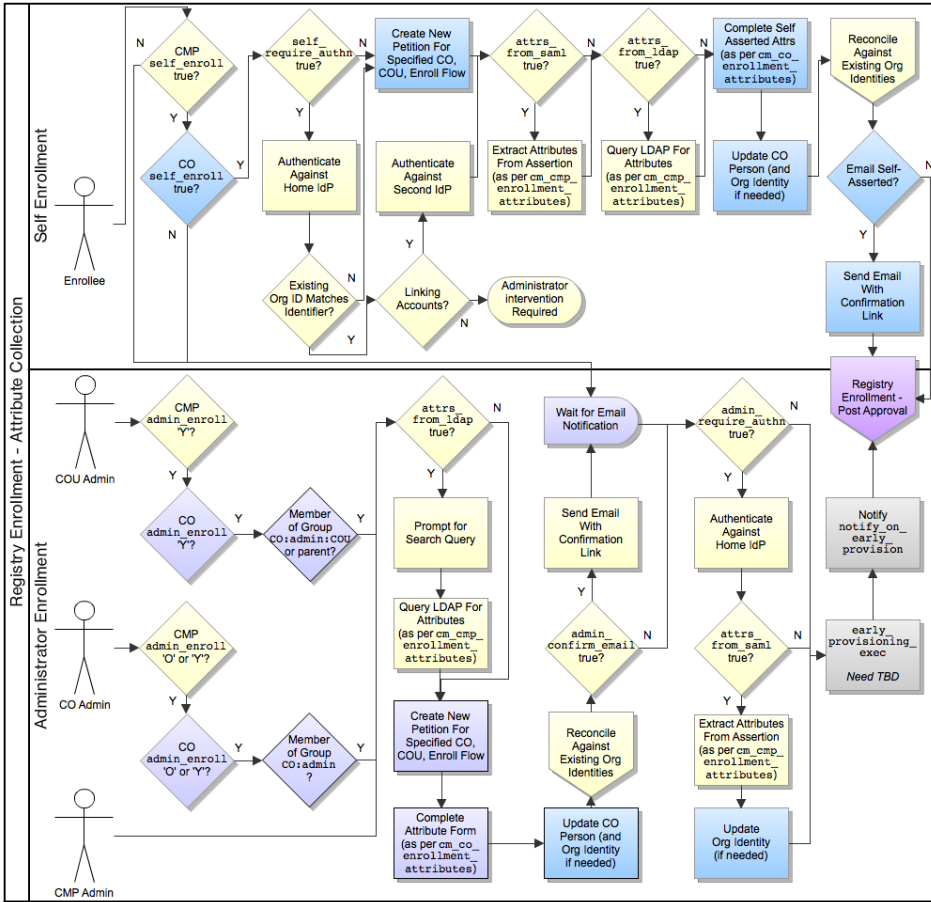
The Enrollment process is initiated by creating a Petition attached to an Enrollment Flow.

The Registry Enrollment is configurable, as described in this diagram and configured via [cm_cmp_enrollment_configurations](#) and [cm_co_enrollment_flows](#):

- Both LDAP and SAML may be in use simultaneously since different organizational sources may support different methodologies.
- Any attribute configured to be provided via LDAP or SAML becomes organizational-authoritative and cannot be changed by the enrollee. (This is currently true across all organizations, but this restriction may be removed in a future release.)

The Registry Enrollment model is designed to support the following:

- **Federated Identity:** Authentication happens at a home institution's IdP. Attributes may or may not be retrieved. `self_require_authn` or `admin_require_authn` must be enabled.
- **IdP of Last Resort:** The CO will manage the user's credentials. `self_require_authn` or `admin_require_authn` may both be disabled. The early provisioning step is intended to support this model – allowing the creation of credentials before the user authentication step.
- **Account Linking:** An individual known to the platform has more than one IdP, and would like the identities asserted from each IdP linked to the same profile.



Status

