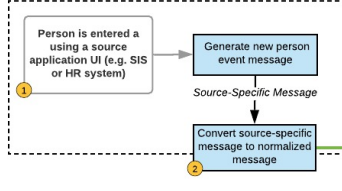


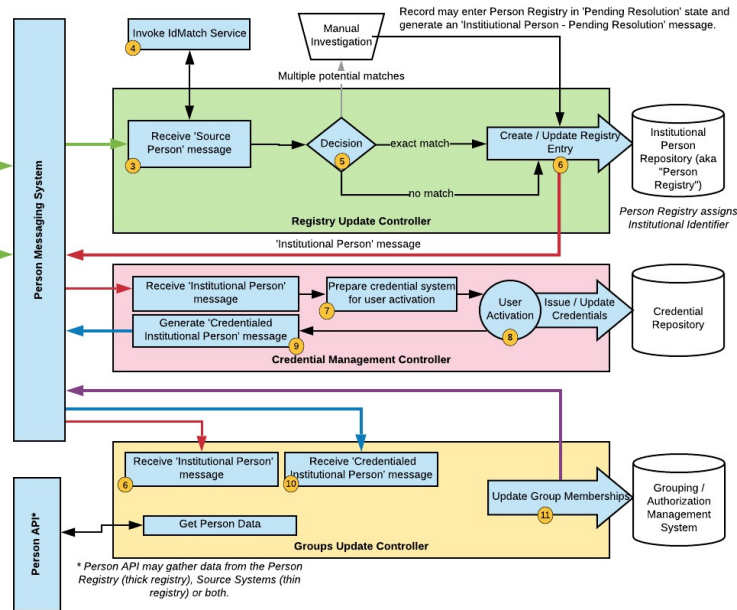
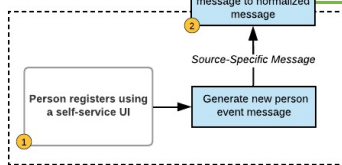
TAP Entity Registry - Identity On-boarding with Messaging

ENTITY REGISTRY - IDENTITY ONBOARDING MESSAGE FLOW

Institutional Source Systems



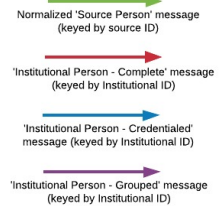
Self-Registration



- Person is entered into an institutional source system or self-registers.
- A system-specific connector normalizes data and sends a 'Source Added Person' message to the Person Queue.
- The Person Registry receives the 'Source Added Person' message and invokes the IdMatch service to see if this is a person already known to the Registry.
- The IdMatch service returns match information (e.g. 'exact match', 'possible match', 'no match')

- Based on the results of the IdMatch call, the Registry Update Controller will either add a new person, update an existing person, or invoke a manual review process.
- Whenever a person is added / updated in the Person Registry, an 'Add / Update Institutional Person' message is generated and placed on the Person Queue. Some institutions may choose to update institutional groups at this time, so the Groups Update Controller may act on this message.
- The Credential Management Controller receives the 'Institutional Person' message and prepares the credentialing system for the user to activate or register a credential.

- The user activates or registers a credential using the institution's activation process
- The Credential Management Controller generates a 'Credentialed Institutional Person' message to inform systems that the user has been assigned a credential.
- The Groups Update Controller receives an 'Institutional Person - Credentialed' message and gathers information about the person via the Person API
- The Groups Update Controller uses data from the Person API to update data-driven group memberships within the grouping / authorization system. An 'Institutional Person - Grouped' message is added to the Person Messaging System.



* Person API may gather data from the Person Registry (thick registry), Source Systems (thin registry) or both.