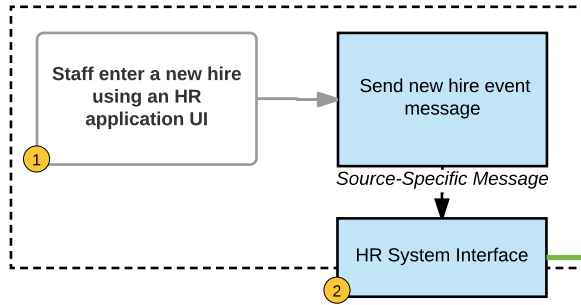
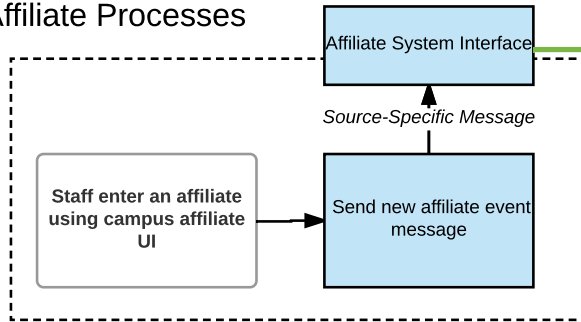


# MULTIPLE SOURCE SYSTEMS TO REGISTRY V2.2

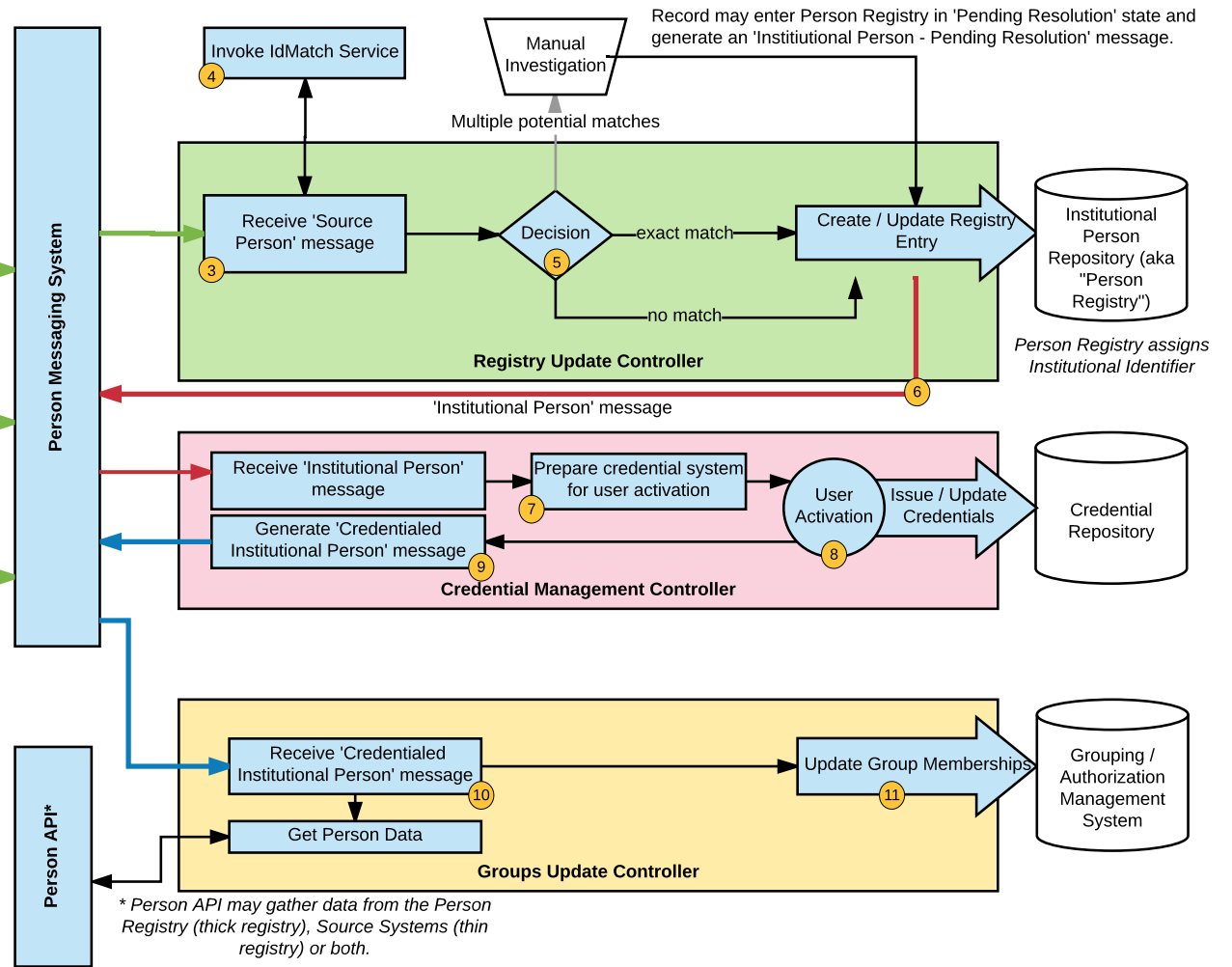
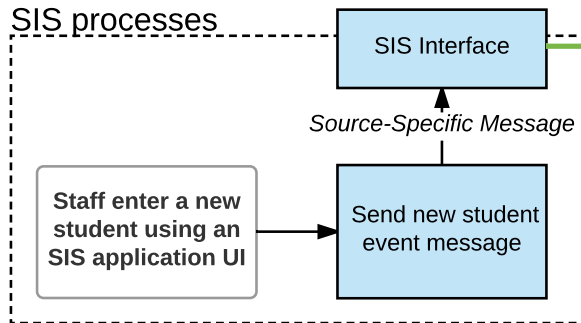
## HR processes



## Affiliate Processes



## SIS processes



Normalized 'Source Person' message (keyed by source ID)

'Institutional Person - Complete' message (keyed by Institutional ID)

'Institutional Person - Credentialed' message (keyed by Institutional ID)

1 Person is entered into HR system

2 An HR-specific connector normalizes data and sends a 'Source Added Person' message to the Person Queue.

3 The Person Registry receives the 'Source Added Person' message and invokes the IdMatch service to see if this is a person already known to the Registry

4 The IdMatch service returns match information (e.g. 'exact match', 'possible match', 'no match')

5 Based on the results of the IdMatch call, the Registry Update Controller will either add a new person, update an existing person, or invoke a manual review process.

6 Whenever a person is added / updated in the Person Registry, an 'Add / Update Institutional Person' message is generated and placed on the Person Queue.

7 The Credential Management Controller receives the 'Institutional Person' message and prepares the credentialing system for the user to activate or register a credential.

8 The user activates or registers a credential using the institution's activation process

9 The Credential Management Controller generates a 'Credentialed Institutional Person' message to inform systems that the user has been assigned a credential.

10 The Groups Update Controller receives an 'Institutional Person - Credentialed' message and gathers information about the person via the Person API

11 The Groups Update Controller uses data from the Person API to update data-driven group memberships within the grouping / authorization system.