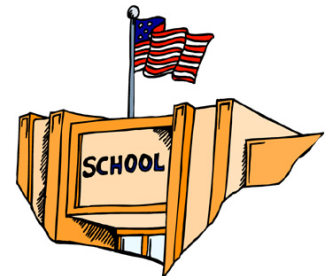


Nebraska K-12 Identity Federation Update - October 9, 2014

- 303,242 public PreK-12 students in 2012-13
- 249 public school districts
- 17 Educational Service Units (ESUs)
- ESUCC coordinates statewide K-12 projects with ESUs and Department of Education

Nebraska K-12 Education





BlendEd Initiative

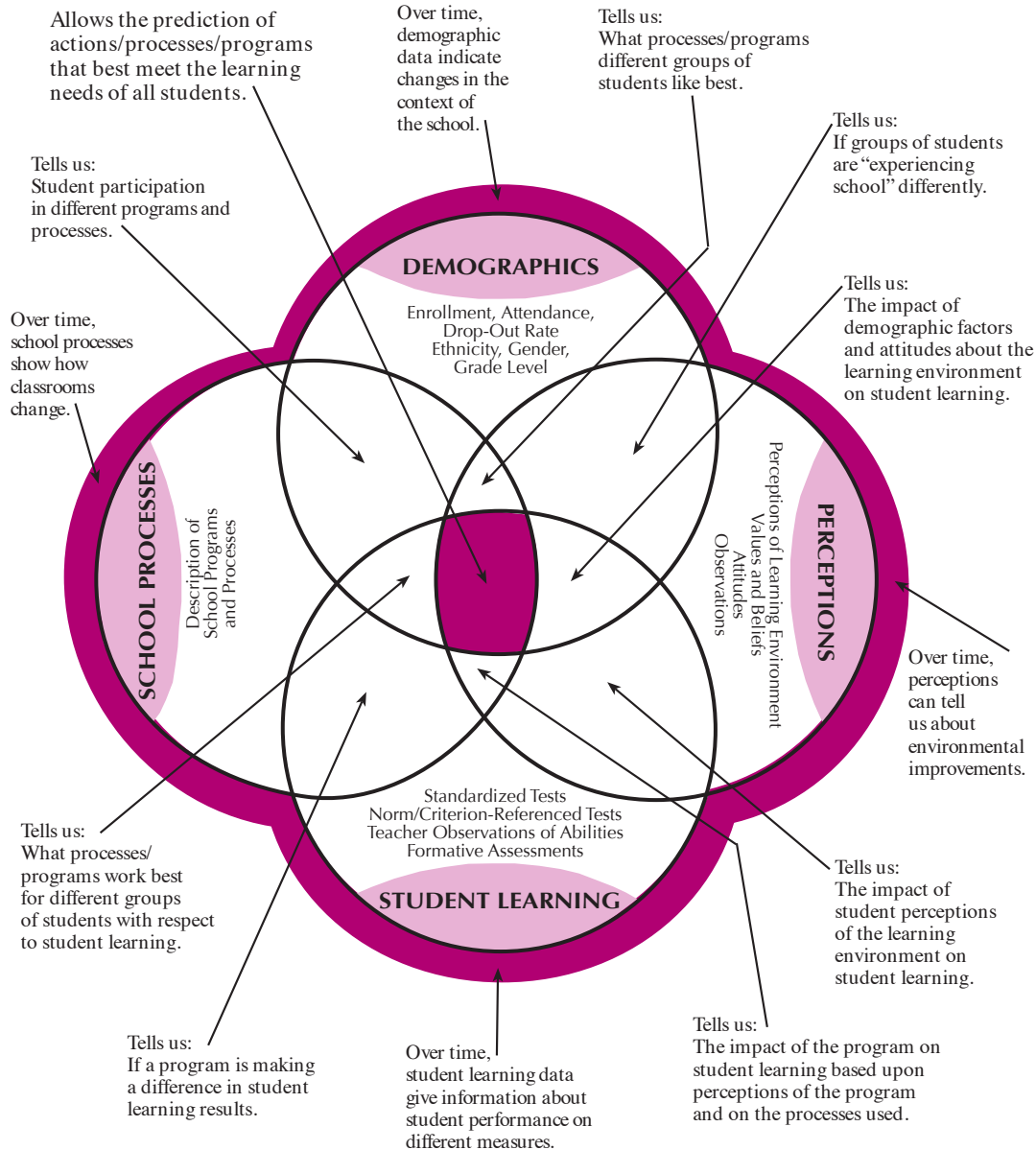
Blended learning is an educational model that combines traditional face-to-face/distance classroom methods with online delivery and participation; and an element of student control over time, place, path, and pace.

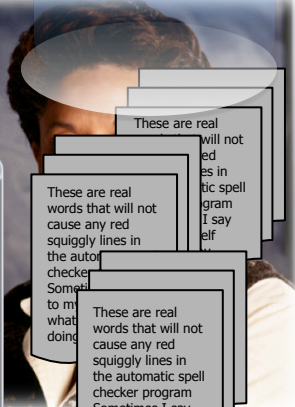


BlendEd Technology Elements

- Learning Object Repository
- National Resources
- Learning Management Systems
- Single Sign-On
- Portal Environment
- Statewide Professional Development

Multiple Measures of Data






Ed-Fi Data Dashboard: ADVISER



Ed-Fi Data Dashboard: ADVISER


 NEBRASKA DEPARTMENT OF EDUCATION

EXPORT ALLPRINTSUPPORTLOG OUT

Bonora Public SchoolsBonora High SchoolClint Arnold

Search










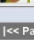
Back to list1 of 2

 **Clint Arnold**

Student List:Students From All Sections

Data View:General Overview

CUSTOMIZE VIEW

Student	Grade Level	Designations	ATTENDANCE / DISCIPLINE		GRADES			
			Number of Days Absent	Last Four Weeks Class Absences	Current Year Failing Grades	# Grades Below C	Courses Dropping > 10%	Total Credits Earned
 Alston, Marcus L.	10th		10	0.0% ◀▶	0 ▲	2 ▼	1 ◀▶	13.50
 Apodaca, Steven E.	9th		18	0.0% ◀▶	0 ◀▶	0 ▲	1 ▼	6.50
 Behler, Daniel H.	10th		10	0.0% ◀▶	0 ◀▶	1 ▼	1 ▼	12.50
 Berger, Eduardo G.	9th		10	0.0% ◀▶	0 ◀▶	2 ▼	1 ▼	7.00
 Brackett, Morgan B.	10th		6	0.0% ◀▶	0 ◀▶	0 ◀▶	1 ▼	15.00
 Brown, Sergio M.	11th	HAL	5	0.0% ◀▶	0 ◀▶	0 ◀▶	0 ◀▶	17.00
 Byrnes, Sophia U.	10th		9	0.0% ◀▶	2 ▼	3 ▼	2 ▼	12.00
 Calderon, Michael G.	10th	A 504	26	0.0% ◀▶	1 ▼	3 ▼		6.50
 Cantv, Shelby C.	10th		24	0.0% ◀▶	1 ▼	1 ▼	2 ▼	13.50
 Cason, Natalie K.	11th		5	0.0% ◀▶	0 ◀▶	2 ▼	1 ▼	22.00

<< Page 1 of 1 >>Rows per page: 10 20 50 100Total Rows: 10

HALHigh Ability Learner

SSpecial Education

504504 Designation

LELL, LEP or Bilingual

ELate Enrollment

PPartial Transcript

ATest Accommodation

Met Goal

Below Goal

Getting Better

Getting Worse

No Change

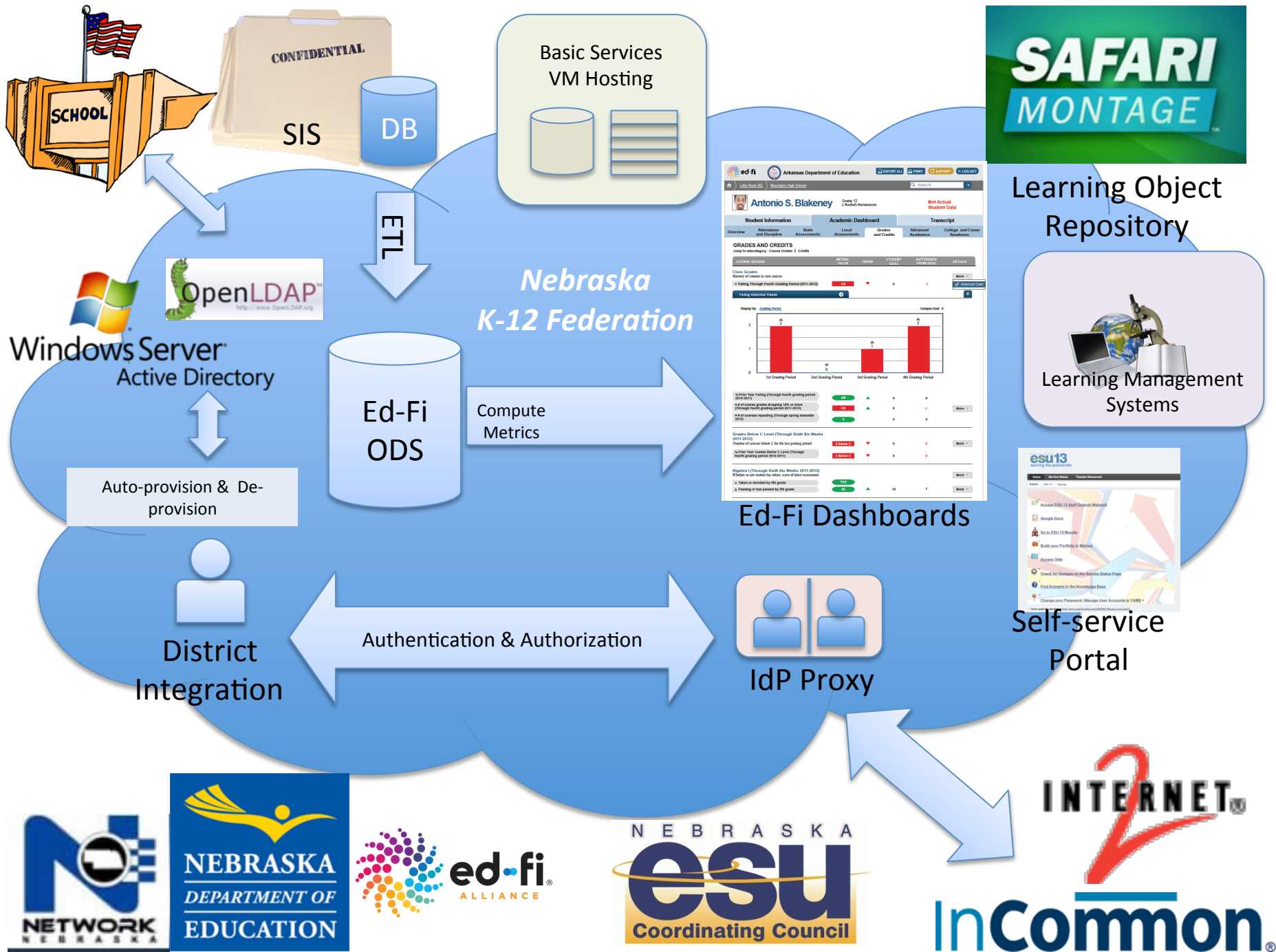
© 2014 Ed-Fi Alliance, L.L.C. All rights reserved.
Anonymized student data.

Classroom View

This view of the dashboard will show for each teacher (Clint Arnold), students taught along with key performance indicators.

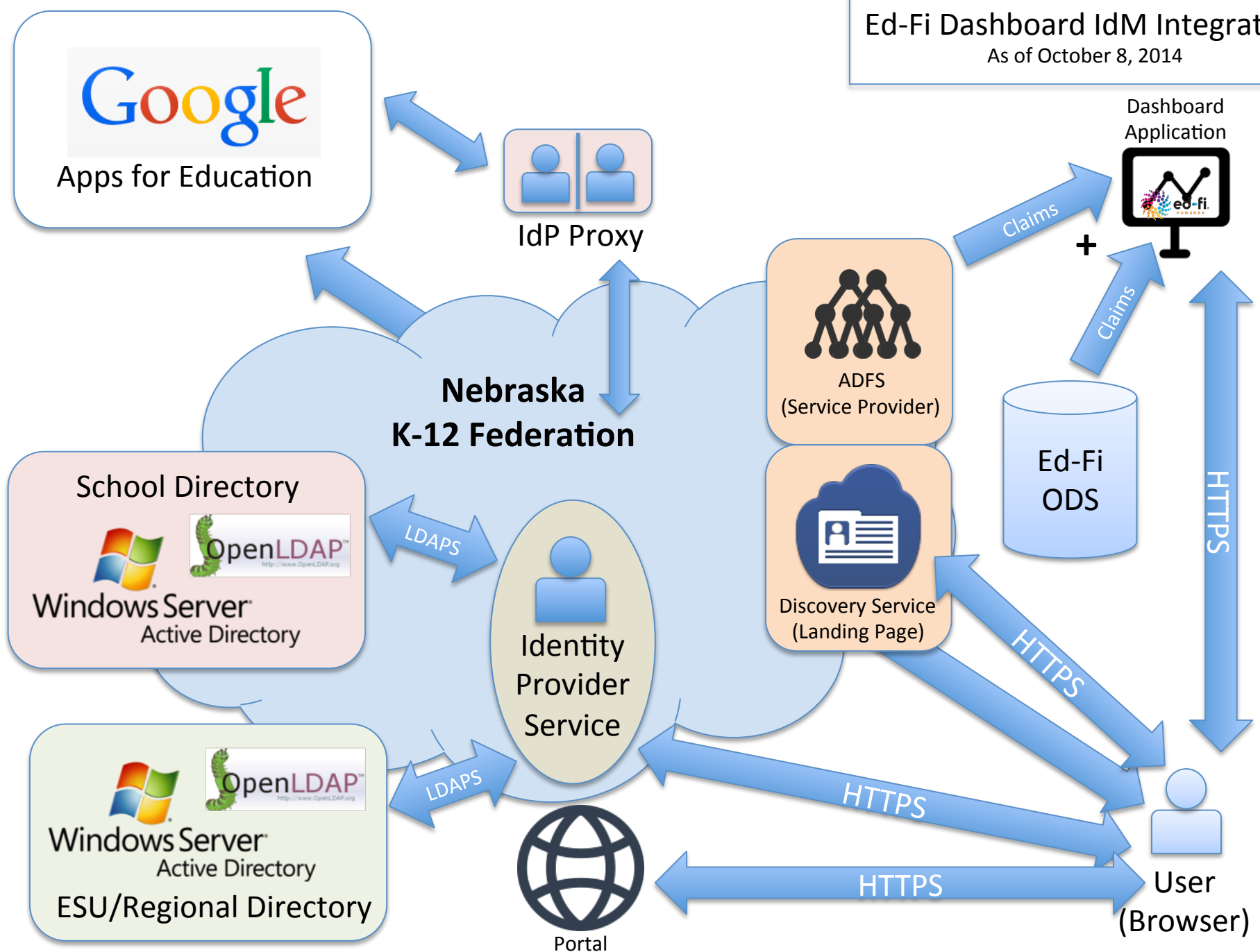
Identity Management Vision

- One identity/account per user
- Automatic, real-time application access/ authorization provisioning
- Automatic, real-time authentication provisioning & user self-service
- Easy access to applications via portal & SSO
- Aggregated, secure, searchable statewide staff directory



Ed-Fi DashboardIdM Integration

As of October 8, 2014



Next Steps

- Complete ADFS integration testing
- Add pilot district IdPs for access to ADVISER dashboard
- Add uPortal SP for development and pilot
- Integrate Safari Montage servers as SPs
- Integrate LMS as SPs – Blackboard Learn, Moodle, Canvas, Schoology
- Add district and ESU IdPs/connections to central IdP
- Integrate Discovery Education as SP

A Statewide Support Model

