

CIFER

Community Identity Framework for Education and Research

www.ciferproject.org

**InCommon Virtual Working Groups
May 20-21, 2013**

Overview

- What is CIFER
- Campus Perspectives
 - UCB, Dedra Chamberlin
 - Penn State, Renee Shuey
- Where are we now
- CIFER Organizational Model
- How to get involved
- Stay tuned in...

What is CIFER

CIFER is a

- vision of IAM for education and research
- architecture
- collaboration
- set of modular open source components by and for higher education
- community of practice

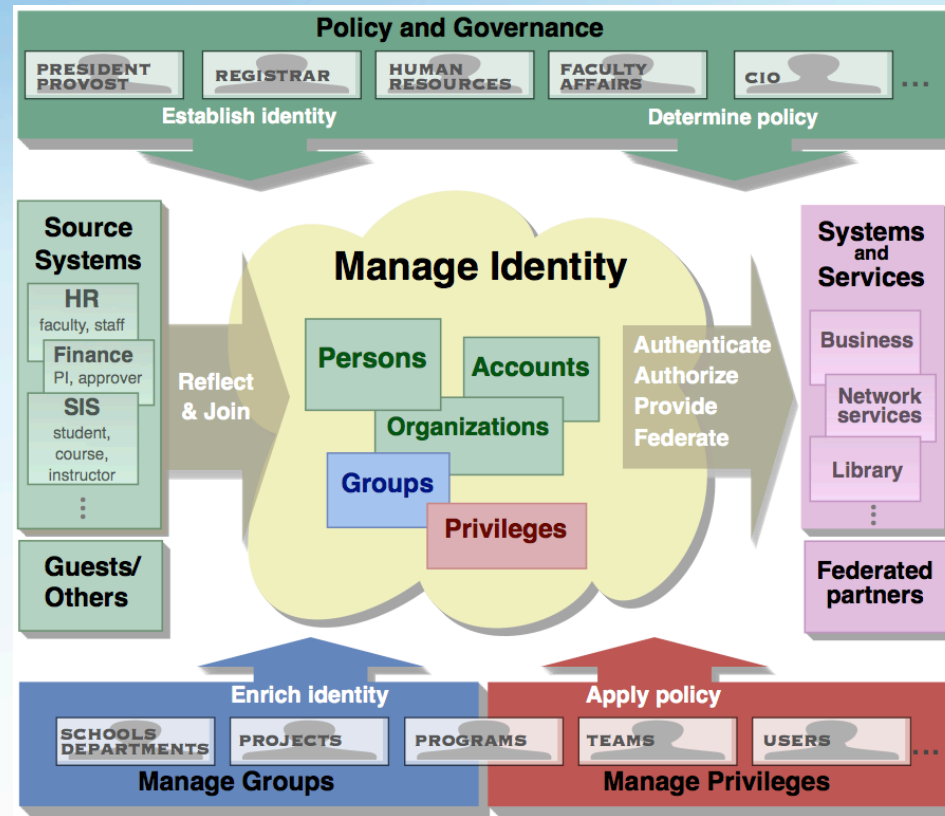
CIFER Vision

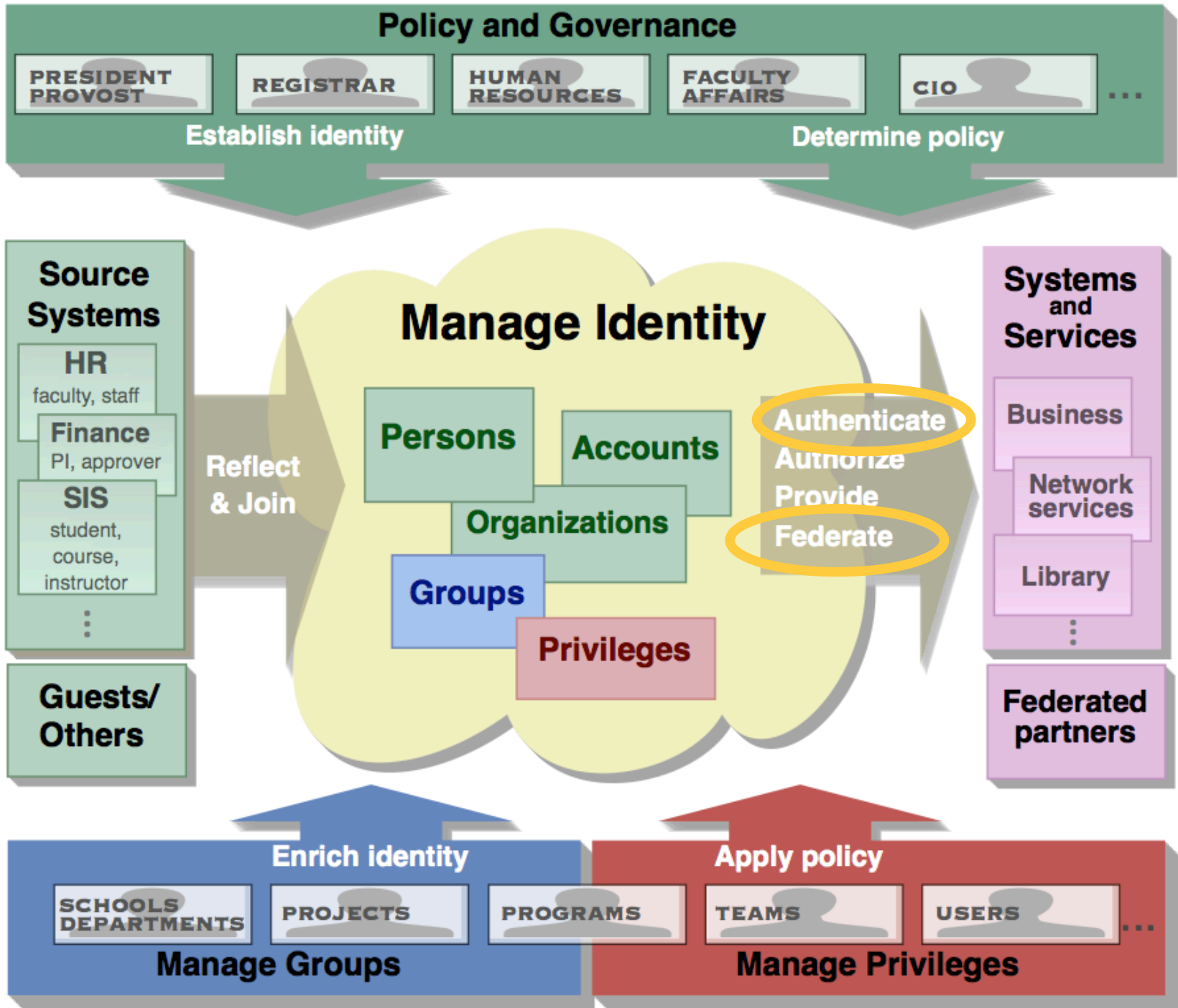
“It's not just about federation, it's about enabling high-value collaboration across thousands of disciplines and millions of people. Hence agreement on attribute and authorization management, application integration, administration procedures, workflow, privacy management,…”

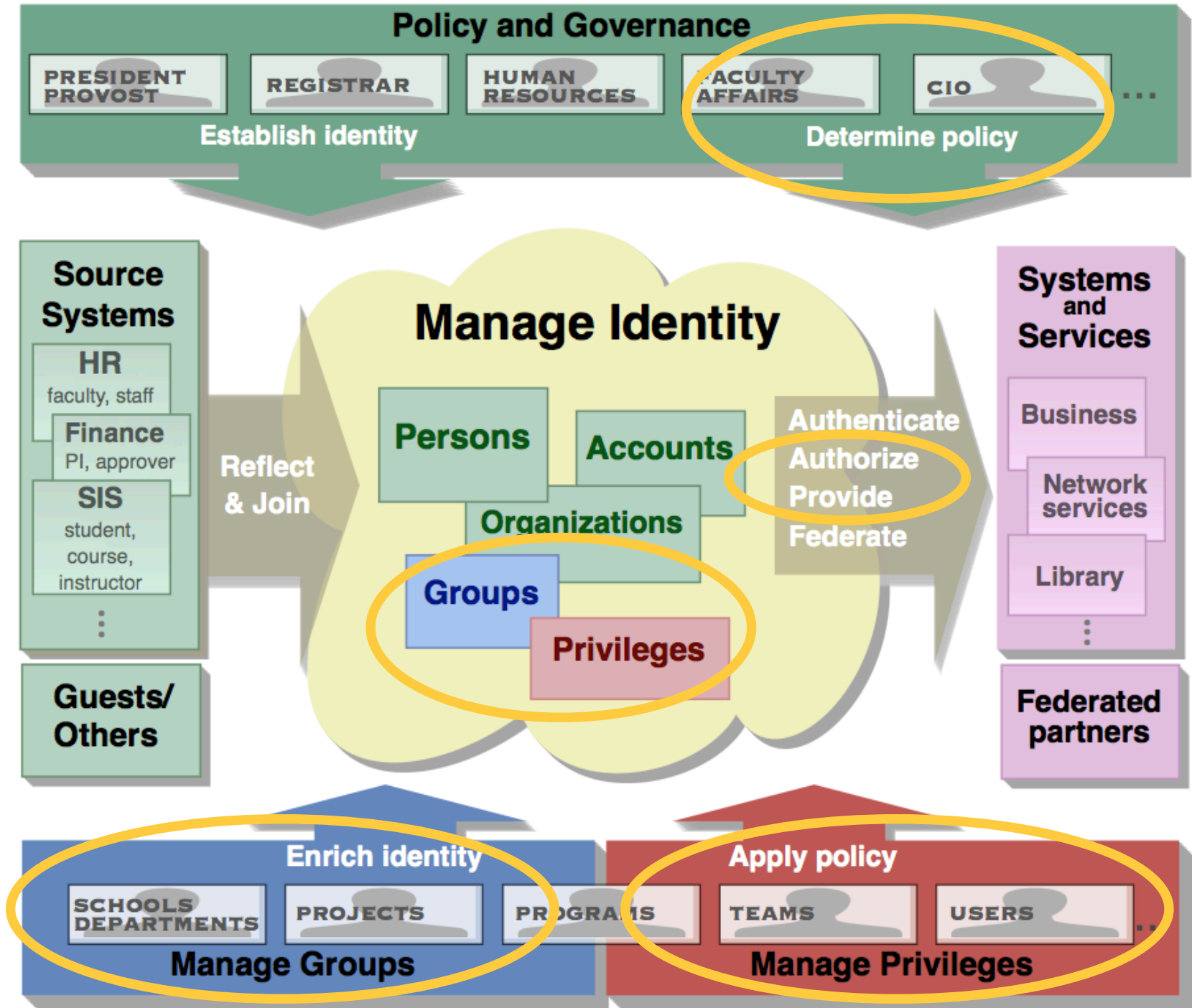
- RL 'Bob' Morgan

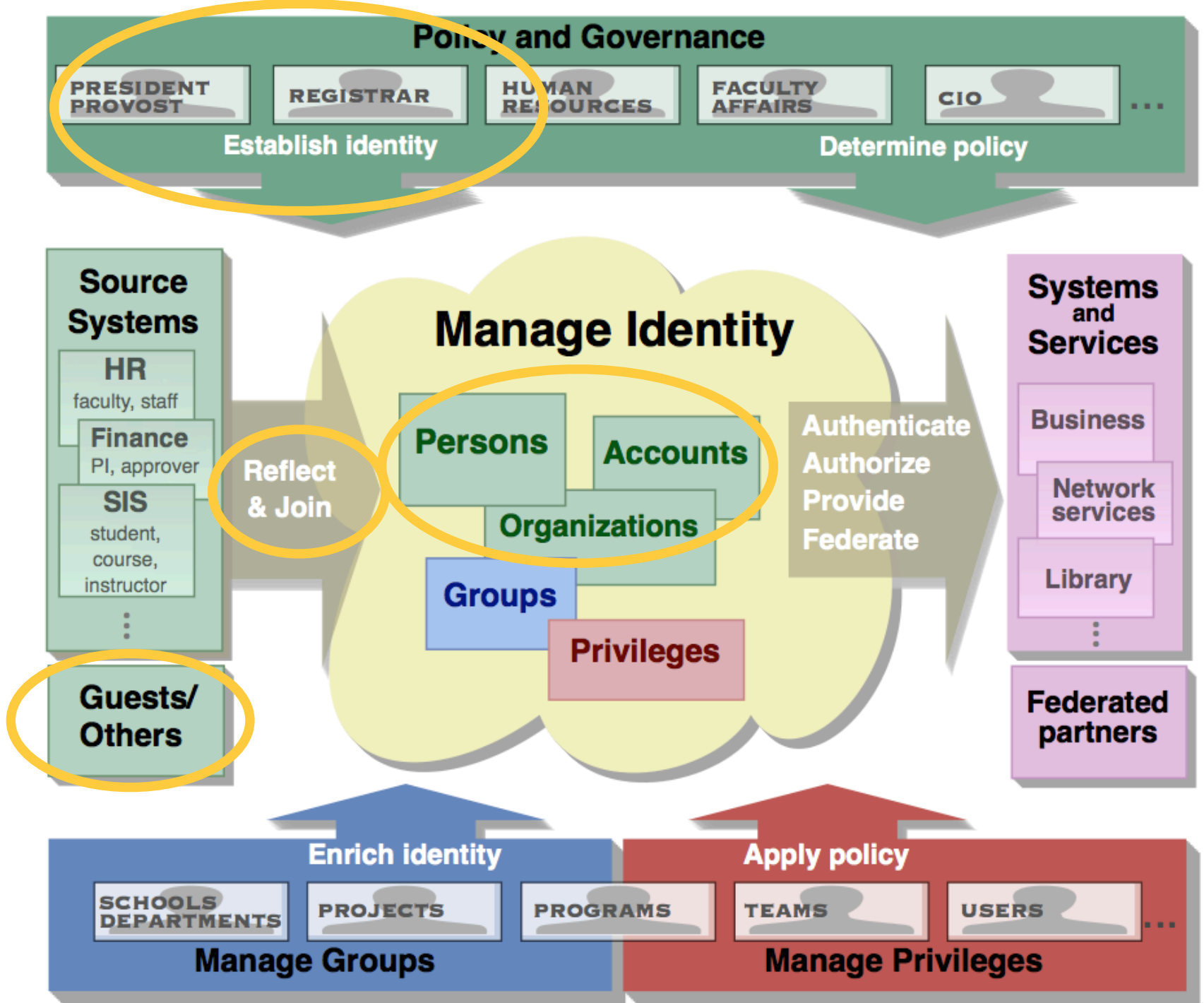
CIFER Architecture

- Modular
- Cost effective
- Capable
- Evolving





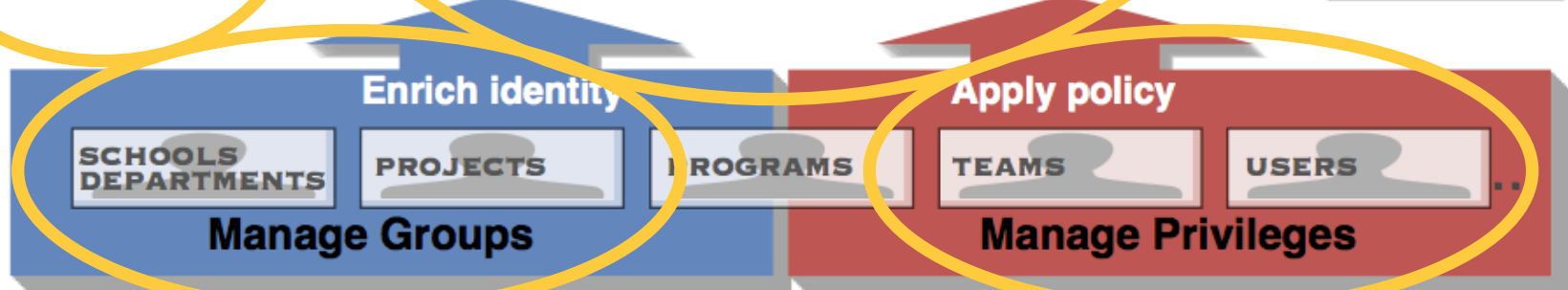
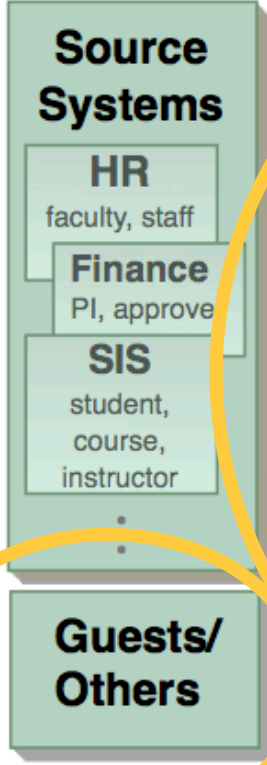
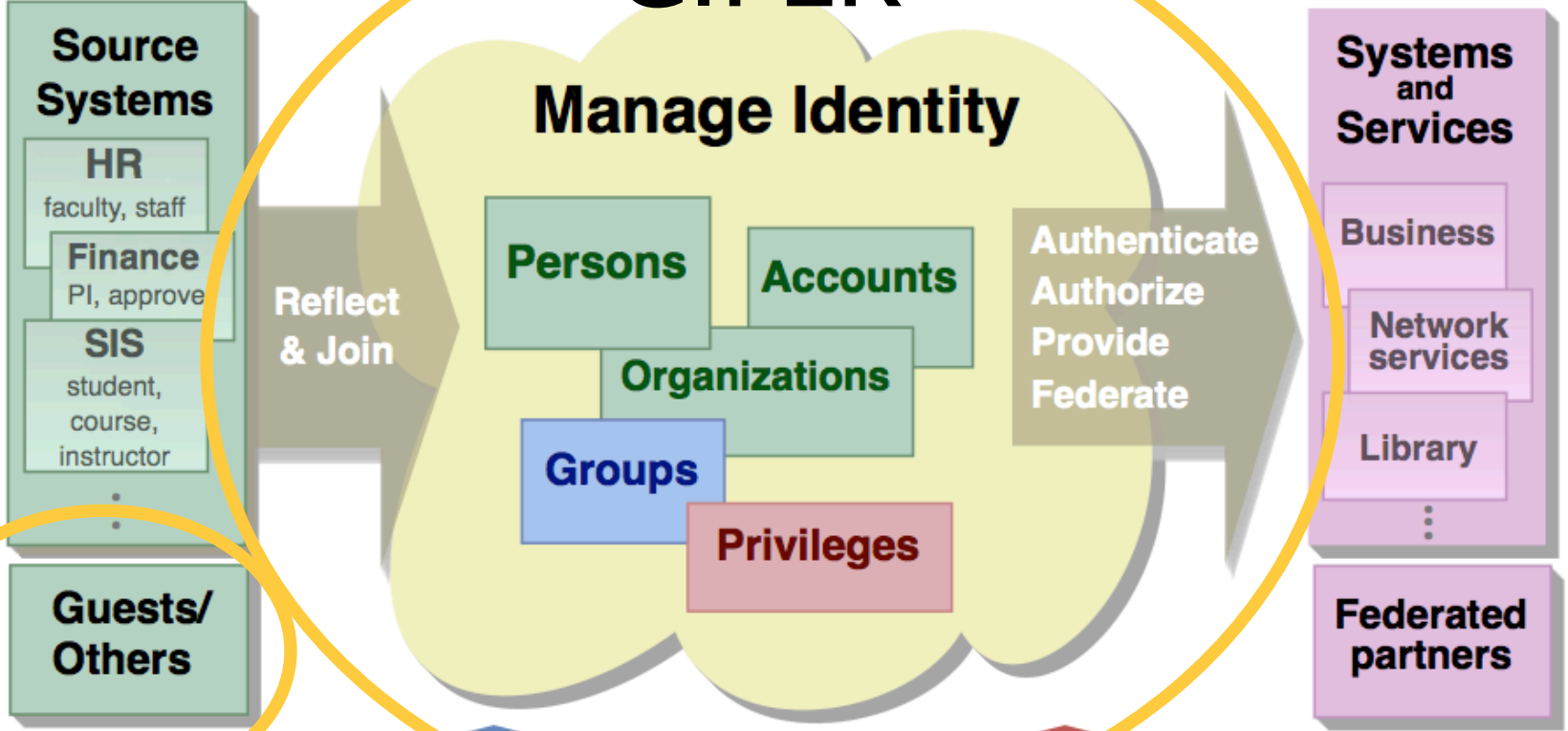






CIFER

Manage Identity



CIFER Modular Components

- WebSSO and Federation - CAS and Shibboleth
- Groups and Authorization - Grouper, KIM
- Person Registry - OpenRegistry and CPR
- Identity Match - UCB Identity Match
- Provision & Integration Recipes
- IAM Console

CIFER Collaboration

- Organizations
 - Apereo (Jasig/Sakai)
 - Quali
 - Internet2
- Projects
 - CAS, Shibboleth
 - Grouper, KIM
 - OpenRegistry, CPR
- Individuals and Institutions

CIFER Collaboration

- Tom Barton - Chicago, Grouper
- Rob Carter - Duke
- Jim Jokl - Virginia
- Dedra Chamberlin - UCB & UCSF
- Benn Oshrin - Internet2, UCB
- Renee Shuey - PSU
- Eric Westfall - Kuali Rice, Indiana
- Steve Olshansky - Internet2
- Bill Yock, Washington - Rice Board
- Keith Hazelton - UW-Madison, Internet2
- Bill Thompson - Unicon, Apereo, CAS
- Steven Carmody - Brown
- Jeremy Rosenberg - SFU
- Jimmy Vuccolo - PSU
- Karl Grose, UCB
- Andrei Mattes, UCB
- Omer Almatary, Rutgers
- Celeste Copeland, North Carolina
- Warran Curry, Florida
- Michele Decker, Notre Dame
- Jeremy Grieshop, Clemson
- Karsten Huneycutt, North Carolina
- Derek Owen - Notre Dame
- Andrew Petro - Unicon, CAS
- Chris Phillips - Canarie, CA
- Gary Sharpe - UC Davis
- Muhammad Siddique - Rutgers
- Boyd Wilson - Clemson
- Chris Hyzer, Penn

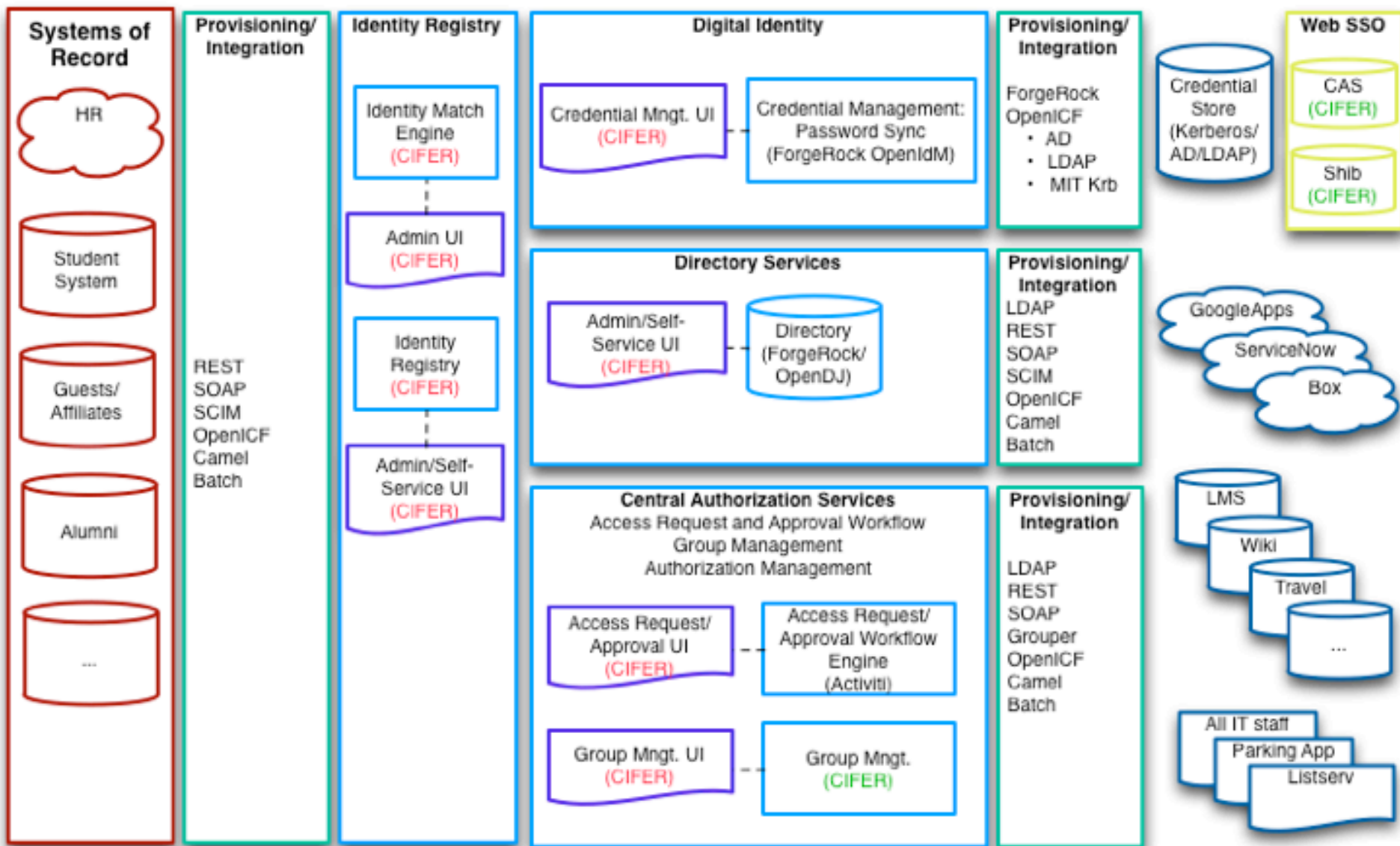
CIFER Community of Practice

- Conferences
- Best practices
- Community support
- Cookbooks and implementation guides
- Workstreams

Campus Perspectives

- Penn State, Renee Shuey
- UCB/SF, Dedra Chamberlin

UC Berkeley/UCSF Next Gen IAM Architecture - May 2013



Where are we now?

- Production ready
 - CAS, Shib, and Grouper
- Early adopters and evaluation
 - OpenRegistry, CPR
- Workstream committees
 - cross project collaboration
- Work to be done!
- CIFER participation models

Still many gaps to fill...

Identity Registries

- Identity Matching and Reconciliation improvements needed
- UI improvements for both CPR and Open Registry needed
- Converged, standardized APIs needed

Access Management

- Standard API's for improved integration in all projects needed
- Additional business-friendly role creation and management capabilities needed

Authentication

- Account and credential issuance and management capabilities needed
- Social authentication support needed
- Multi-factor authentication support needed
- Levels of Assurance use cases and improvements needed

Provisioning & Integration

- System-of-Record to Registry patterns, toolkits and connectors needed
- Registry to Target-Consuming-System patterns, toolkits and connectors needed
- Enhanced support and guidance for integration with cloud services

IAM Console

- Standard UI for all projects needed (end user self-serve and administrator functions)
- Better audit, monitor and reporting capabilities needed

IAM service and support solutions exist, but tend to be limited or fragmented...

- Variety of wiki knowledge bases and email distribution lists, but scattered across multiple projects
- Variety of consortia supported conferences and training events, but scattered across multiple projects
- A few commercial affiliates offer training and support services, but typically focused on supporting one or a few of the components or projects

The CIFER Alignment Solution

- Facilitate coordination across existing IAM projects
 - To build out a comprehensive, yet modular, set of IAM components aligned to an overall roadmap
- Raise new funds
 - To augment and accelerate development within existing IAM projects
 - If necessary, to launch carefully scoped new projects that address remaining gaps in IAM capabilities
- Develop extensive knowledge base and support systems
 - To facilitate implementation and ongoing support for CIFER-aligned IAM components by participating campuses

Core CIFER Value Propositions

Cross-project visibility and interconnection with the aim of significantly ***easing campus assessment, adoption and ongoing support!***

All CIFER Aligned solutions, in the form of code bases, community contributions, documentation and training materials are available to all, ***free of charge under standard open source licenses!***

All CIFER Aligned solutions are ***built by and for the higher education and research community*** meeting our diverse and complex needs!

CIFER Consortium Participation Goals

- Inclusive participation model to provide value to institutions of all sizes and missions
- Tiered participation model based on the size and/or mission of the institution
- Different incentive and benefit options based on participation levels

CIFER - Participation Levels (Proposed)

Supporters

\$1/FTE Student/Yr for 2 yrs
\$50K Total Cap

Teaching Centric
Institutions, including
Liberal Arts and
Community Colleges

- Base Incentives
- Indirect Participation

Members

\$2/FTE Student/Yr for 2 yrs
\$100K Total Cap

Doctoral class institutions,
significant graduate and
professional but limited
scope research agendas

- Base Incentives
- Elected Board Members

Principal Members

\$5/FTE Student/Yr for 2 yrs
\$250K Total Cap

Research class
institutions, learned
societies, existing
consortia IAM projects,
commercial affiliates, etc.

- Enhanced Incentives
- Appointed Board Members

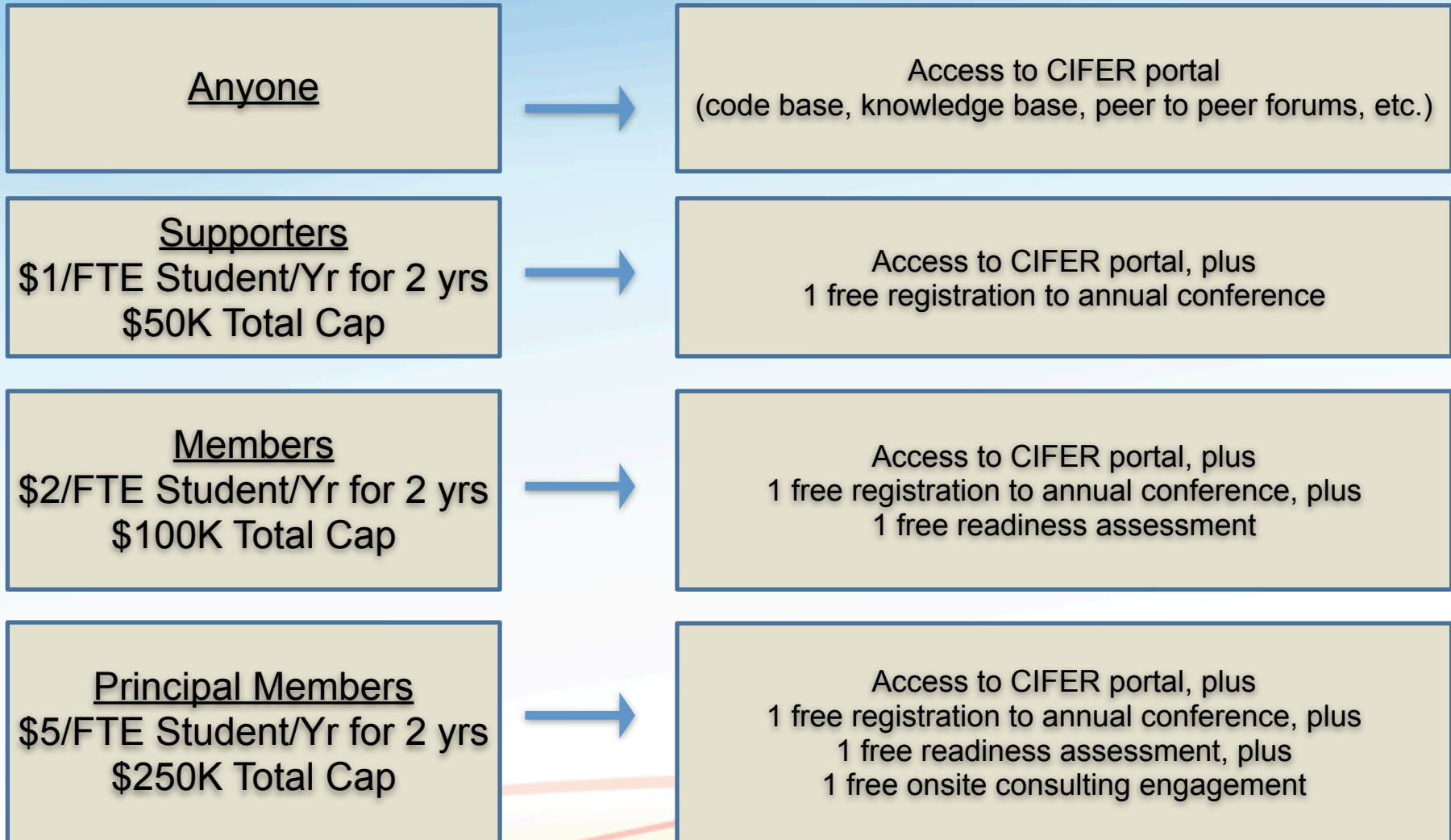
Contributions can be cash
and/or in-kind FTE

CIFER Sustainability Model (Proposed)

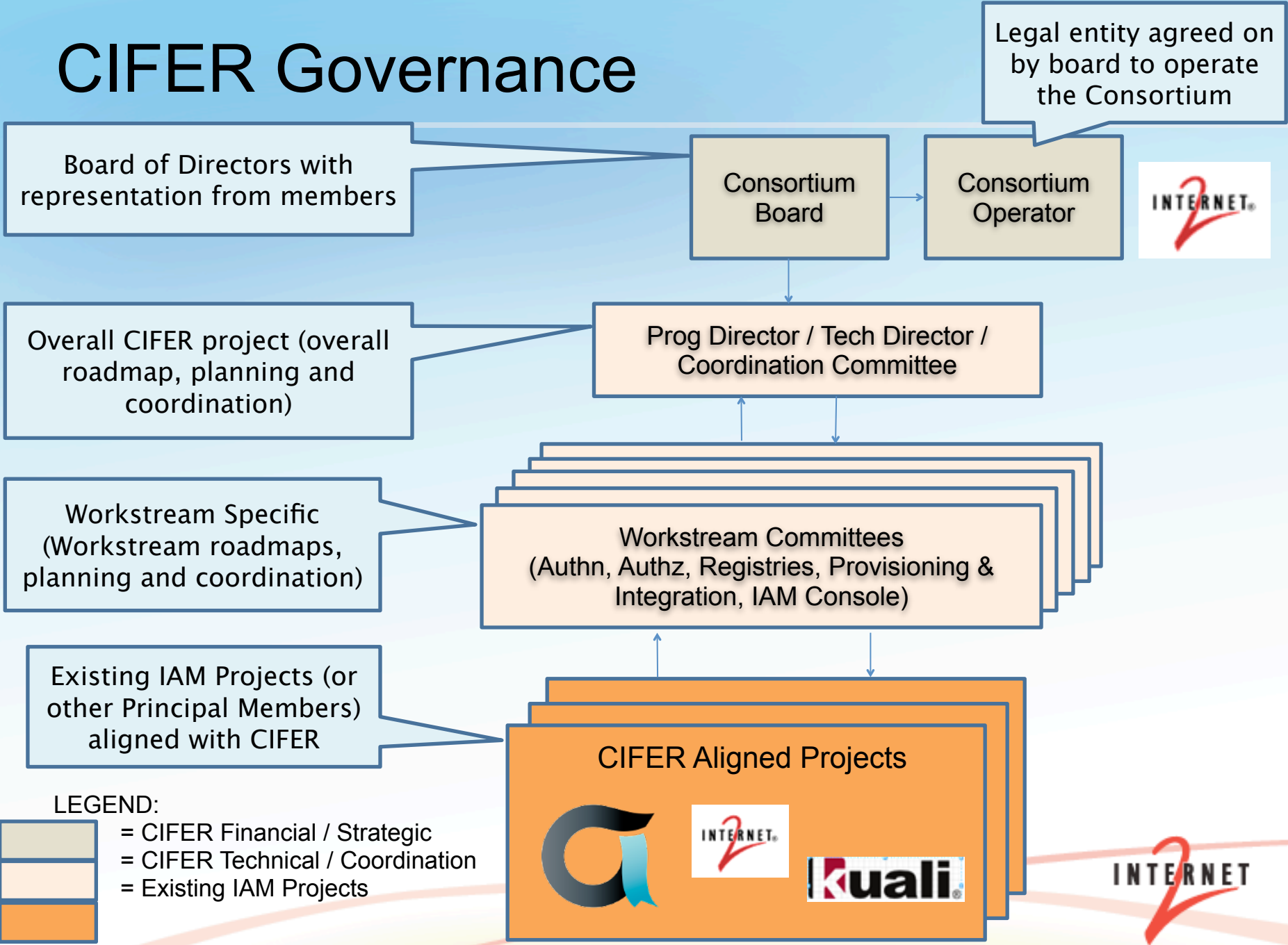
- Develop a general “Cooperative Support” model in which commercial affiliates set aside a percentage of all support revenue for ongoing code maintenance
- Offer CIFER “Certification Marks” to support commercial affiliates that signify the vendor’s commitment to, and track record with, the CIFER aligned solutions

CIFER – Participation Incentives

Sample of possible incentives for illustrative purposes. Actual incentives will be set by the CIFER Consortium Board of Directors.



CIFER Governance



CIFER Next Steps

- Publish CIFER Charter on project web site
- Form initial CIFER Consortium Board of Directors
- Internet2 provides “Consortium Operations”
 - Utilize existing non-profit entity rather than create a new one
 - Provide legal, financial, accounting, etc. services
- Kuali Rice Partners pledge “Principal Member” alignment agreement
 - Includes new IP code contributions around identity registries and data management
 - Includes preliminary pledges of cash and/or in-kind FTE resources of approximately \$1M (\$500K / Yr)

CIFER Next Steps - continued

- Appointment of interim Directors (Program and Technical)
- Establish interim Cross-Workstream Coordination Committee
- Support existing Workstream Committees (additional participants being sought)
- Establish additional “Principal Member” alignment agreements (Internet2 Grouper, Shibboleth Consortium, Apereo, commercial affiliates, etc.)

How can you benefit? Get involved?

- Adopt overall architecture
- Adopt individual components
- Participate in community of practice
- Share local IAM components
- Get involved workstreams, projects, discussions

Stay tuned in...

- CIFER sessions at Open Apereo 2013 - San Deigo
 - 2 half-day seminars
 - 18 conference sessions
 - Lots of CIFER folks...
- IAMOnline
- Internet2 Identity Week - November 11-15, 2013
- CIFER mailing list - community@ciferproject.org
- CIFER teams - <https://spaces.internet2.edu/display/cifer/CIFER+Home>

CIFER @ Open Apereo 2013

CAS and Shibboleth in Action: Enterprise WebSSO and Federation Integration Patterns

<https://www.concentra-cms.com/cfp/program/program!digest.action?sid=1688>

Enterprise Authorization Strategies - Intro to Grouper

<https://www.concentra-cms.com/cfp/program/program!digest.action?sid=1689>

Identity Management and the Academic & Research Community

<https://www.concentra-cms.com/cfp/program/program!digest.action?sid=1568>

IAM by and for the Community: The CIFER Initiative

<https://www.concentra-cms.com/cfp/program/program!digest.action?sid=1606>

One Identity to Rule them All: New Open Source, Higher Ed, Identity Match Engine

<https://www.concentra-cms.com/cfp/program/program!digest.action?sid=1625>

Factoring the Authentication Equation: Integrating Multi-factor Authentication into CAS/
Shibboleth

<https://www.concentra-cms.com/cfp/program/program!digest.action?sid=1632>

Open Registry Development - UCB and Friends

<https://www.concentra-cms.com/cfp/program/program!digest.action?sid=1670>

18 more CIFER sessions at Open Apereo 2013: <http://tinyurl.com/d4l744a>

CIFER

Community Identity Framework for Education and Research

www.ciferproject.org

**InCommon Virtual Working Groups
May 20-21, 2013**