

# MANAGING GCP ON CAMPUS

John Bailey, Washington University in St. Louis

Bob Flynn, Indiana University

George Loftus, Internet2

Linda Roos, Internet2

INTERNET<sup>2</sup>



MAY 14, 2020

online

BY COMMUNITY, FOR COMMUNITY

# Agenda

- Welcome
- Managing Identity and Billing in GCP, GCP's relationship with GSuite
- Network Integration for GCP
- Q&A

# The GCP Virtual Event Series

- General Introduction to NET+ GCP (May 7) – 90 minutes
- Managing GCP On Campus (May 14) – 60 minutes
- Security in GCP with Andy Chang (May 21) – 60 minutes
- Using GCP in Research (May 28) – 60 minutes

# Logistics

- Participants microphones and video are turned off
- Please submit your questions via the Q&A functionality
  - Questions will be moderated, but we may not have time for all
  - Limited offline follow-up afterwards
- Today's virtual event is being recorded and will be made available on the NET+ GCP Wiki site: <https://spaces.internet2.edu/x/MRCJCQ>

## **John Bailey**

Manager of Cloud Services  
Washington University in St. Louis

## **Bob Flynn**

Manager of Cloud Technology Support  
Indiana University

## **George Loftus**

Associate Vice President, Network Services  
Internet2

## **Linda Roos**

Sr. Director, Service Implementation & Retention  
Internet2

## **Oren Sreebny**

Consultant, Internet2 Cloud Programs  
Internet2



# **SPEAKERS**

# Agenda

- Welcome
- Managing Identity and Billing in GCP, GCP's relationship with GSuite
- Network Integration for GCP
- Q&A



# Two Roads Converge

- Generally two starting points
  - Non-Google school
  - Google school
- Washington University – St. Louis
  - R1 private university
  - 36k users
  - O365 for all students, faculty, staff
- Indiana University
  - 9-campus R1 state university
  - 140K users
  - G Suite for all users



Getty Images



# GCP in a non-G Suite school

- Will need to implement either:
  - G-Suite (with GCP and IAM only)
  - Google Cloud Identity
- May find a squatter on your G-Suite domain
- Collaboration with some entities may require GCP projects to remain “outside” your org







# GCP in a G Suite school

- Most control is with G Suite admin
- Enabling GCP
  - The Bad 'Ol Days – on by default
  - V2 – Project creation switch in G Suite admin console
  - Current – Enable all, OU or group
- Identity
  - + Seamless
  - Any user can create a project and billing ID with the trial credits
  - Project and billing ID sprawl
  - Google keeps messing with controls



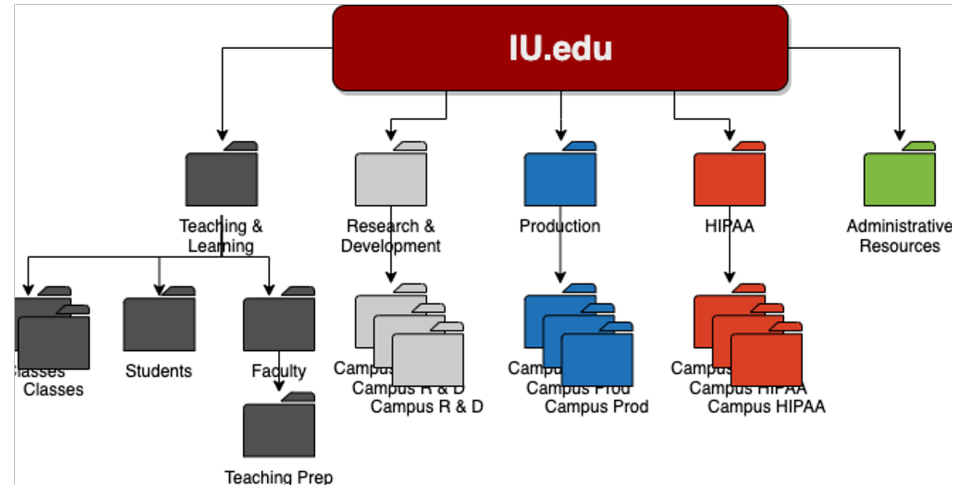


# Architecting an EDU Org

- Learning – fully-open
- Teaching – billing constrained
- Research – open
- Development – open
- Production - constrained
- Sensitive - constrained
- Admin

R  
e  
s  
t  
r  
i  
c  
t  
i  
o  
n  
s

C  
o  
n  
t  
r  
a  
c  
t



# The Bills



## Single Billing ID for entire Org

- + Speeds up account provisioning
- Requires more staff time
- Exceptions for credit recipients

## Billing ID for each customer

- + Directly responsible for projects
- + Easy to deal with credits
- + Cleaner billing monitoring
- Slow turn around getting new IDs



(March 9, 2010 - Source: Chip Somodevilla/Getty Images North America)



# Networking

- GCP Dedicated Interconnect:
  - Familiarized WashU Network Engineers with Google networking
  - Physical construction / new fiber
  - Substantial delays
- GCP partner interconnect:
  - May have been a better option
  - I2 Cloud Connect service
  - Leverage existing I2 network path





# Security

- Roles – primitive, predefined, curated, custom
- Organizational policies
- Operations – log, monitor, troubleshoot
- Forseti – inventory, scan, enforce, explain
- Cloud Security Command Center - Prevent, detect, and respond



# Clean-up



- Moving into a GCP Org
  - Migrating GCP projects
  - Migrating Google identities
- “Discovering” your GCP Org
  - Derelict projects and billing IDs
  - No structure, no status
  - No lifecycle with G Suite



Photo by Lester Public Library – cc: <https://www.flickr.com/photos/7759477@N05>



# Operations

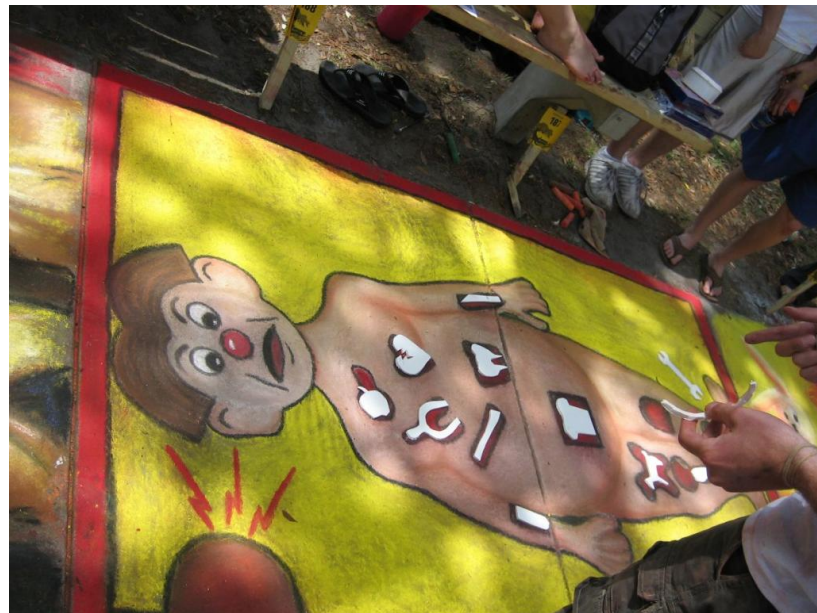
- Resellers
  - Can help streamline payment from different funding sources
- Orbitera
  - 3<sup>rd</sup> party billing tools
  - Budgets and Alarms
- Role-based Support
- G Suite complications
  - Apps Script
  - APIs





# (more) Operations

- Credits
  - Compute & Qwiklabs
  - Exploration & Training (stud/fac)
  - Teaching (faculty *for* students)
  - Research (faculty & PhD)
- Free accounts
  - \$300 w/credit card
- Teaching support
  - Class folders
- Research support
  - Rapid onboarding







# Resources

GCP EDU page

<https://edu.google.com/programs/>

I2 STRIDES blog post

<https://www.internet2.edu/blogs/detail/17661>

IU CGP configuration guide

<https://go.iu.edu/2c0c>

Project discovery and clean-up

instructions <https://go.iu.edu/2d8H>



# Agenda

- Welcome
- Managing Identity and Billing in GCP, GCP's relationship with GSuite
- Network Integration for GCP
- Q&A

The logo for I2Cloud, featuring the text "I2Cloud" in a bold, sans-serif font. The "I" is black, the "2" is red, and the "Cloud" is black. The "2" is stylized with a blue padlock icon integrated into its right side. The logo is positioned in the upper left quadrant of the slide, partially overlapping a large white cloud graphic.

**I<sup>2</sup>Cloud**

# Networking For Cloud

**How StateNET members can leverage regional and Internet2 infrastructure to access the Cloud today**

# Getting to the Cloud



Google Cloud

## Internet2 Peer Exchange

### I2PX

Use of the community's existing 3Tbps of peering capabilities to the major cloud providers for access to cloud SaaS services (e.g. Zoom or Office 365)

## Internet2 Cloud Connect

### I2CC

Enables StateNET members to use the Internet2 and StateNET infrastructure to obtain up to 5Gbps of "direct-connect" private Layer 2 and Layer 3 access to Microsoft, Amazon and Google cloud platforms **at no additional fee**. Extending your data center to the cloud. (Cloud provider fees apply)

## Internet2 Rapid Private Interconnect

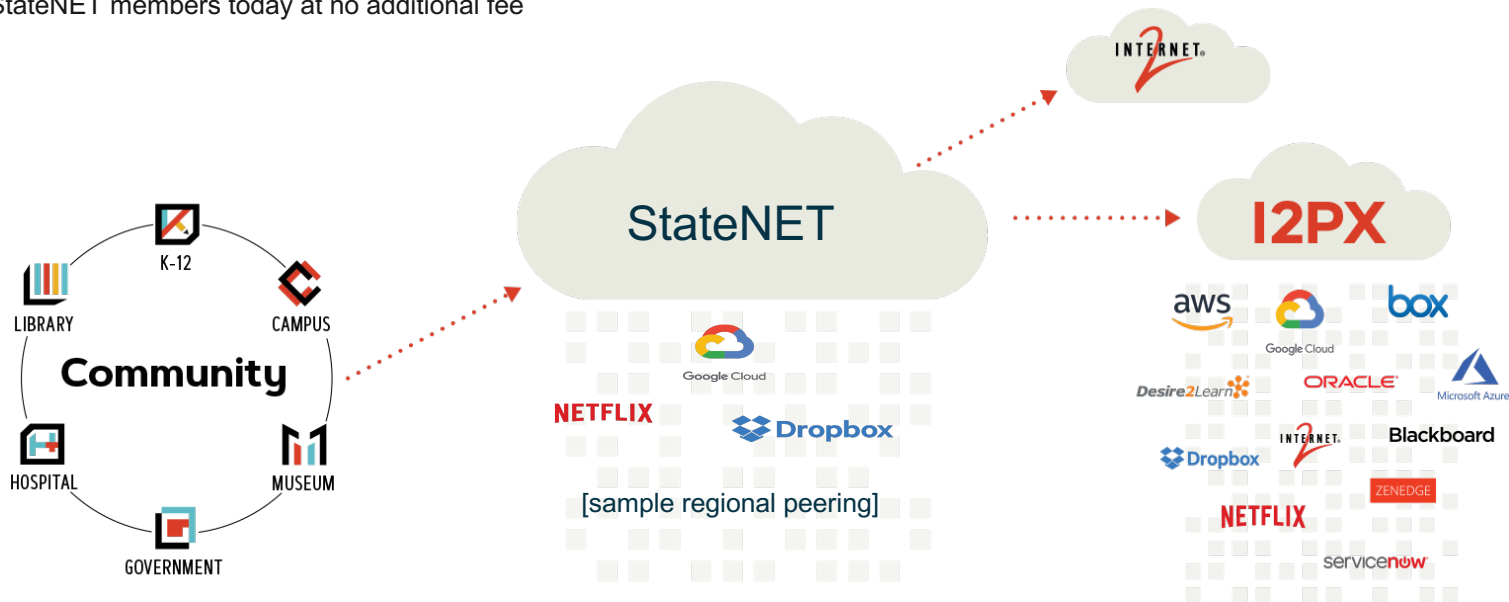
### I2RPI

Provides private 10G interconnections at major peering points across the country at low annual rates. Leverages current investment in StateNET and Internet2 infrastructure to reach cloud providers, for dedicated access or improved resiliency. May be used to connect to any commercial provider located at the peering point

# Designed from the Ground Up to Meet R&E Needs

## Internet2 Peer Exchange **I2PX**

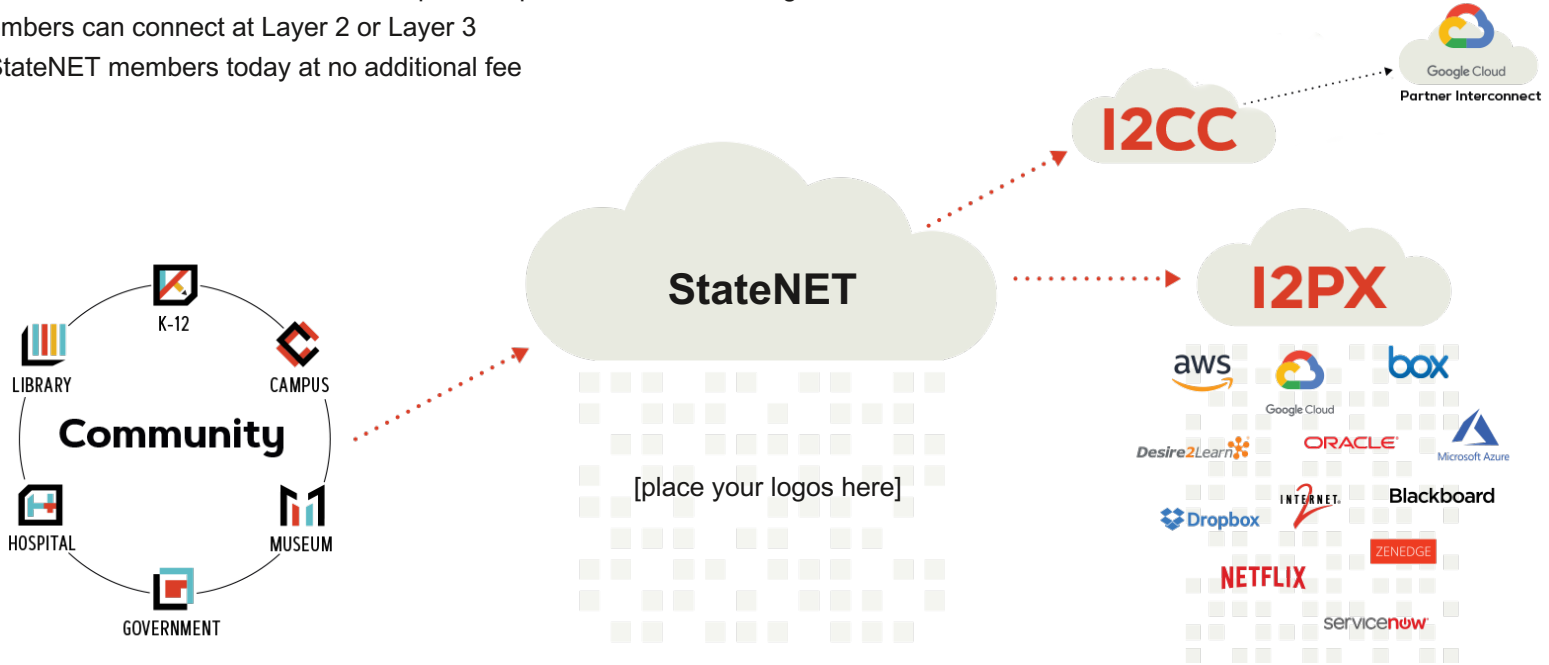
- Allows StateNET to have high performing on-net access to cloud service providers, avoiding the commodity internet
- Designed from the ground up to focus on hosting cloud providers most valued by the Research and Education community
- Available to StateNET members today at no additional fee



# Leveraging R&E Networks for Direct Cloud Connections

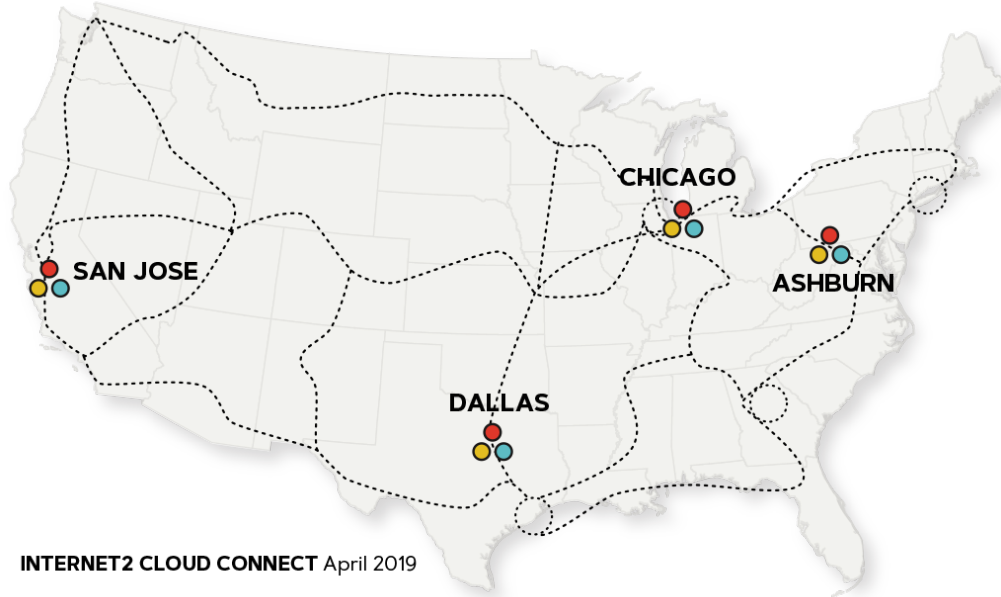
## Internet2 Cloud Connect I2CC

- StateNET members can use Cloud Connect for up to 5Gbps connections to Google Cloud Partner Interconnect
- StateNET members can connect at Layer 2 or Layer 3
- Available to StateNET members today at no additional fee



# Nationwide Connectivity

## Internet2 Cloud Connect I2CC



### ● Microsoft ExpressRoute

- 4x1x10G in Ashburn + GovCloud
- 2x1x10G in Chicago
- 2x1x10G in Dallas
- 2x1x10G in San Jose + GovCloud

### ● Amazon Direct Connect

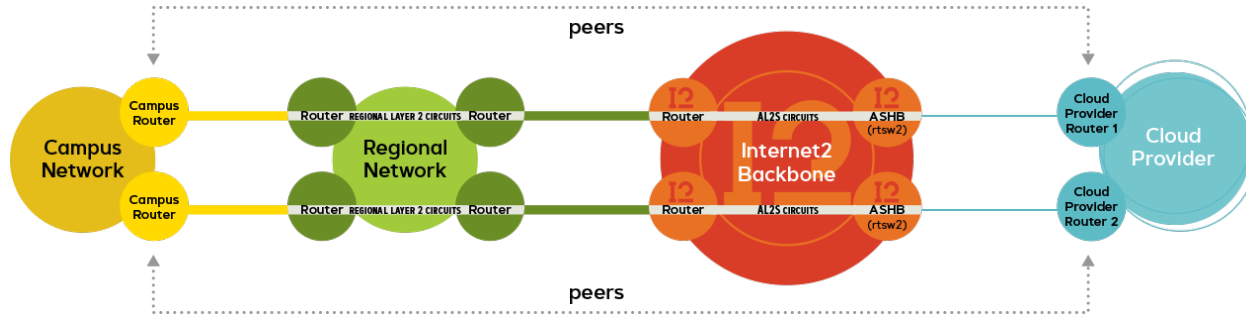
- 4x1x10G in Ashburn
- 2x1x10G in Chicago
- 2x1x10G in Dallas
- 2x1x10G in San Jose

### ● Google Cloud Interconnect

- 2x1x10G in Ashburn
- 2x1x10G in Chicago
- 2x1x10G in Dallas
- 2x1x10G in San Jose

# Layer 2 Connection Option

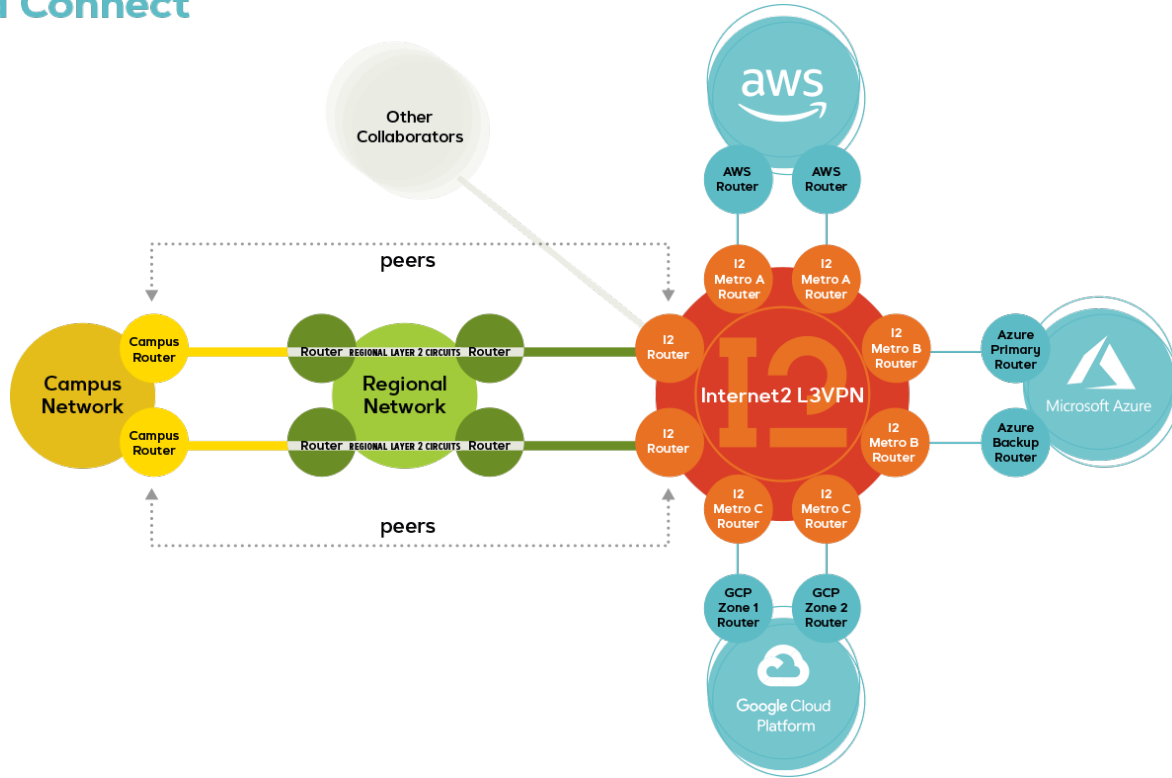
## Internet2 Cloud Connect I2CC





# Layer 3 Connection Option

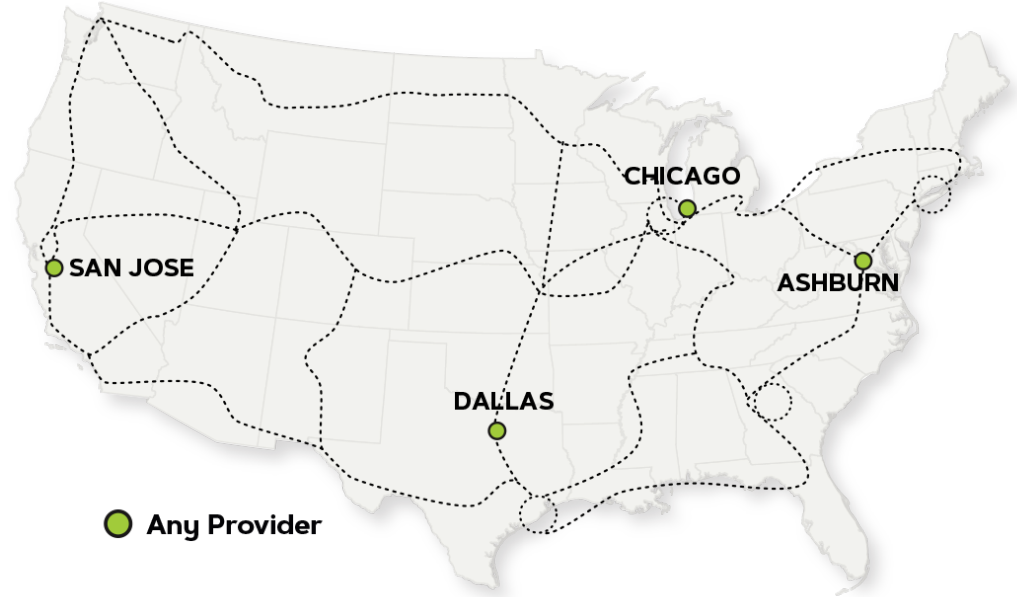
## Internet2 Cloud Connect I2CC



# Nationwide Connectivity

## Internet2 Rapid Private Interconnect **I2RPI**

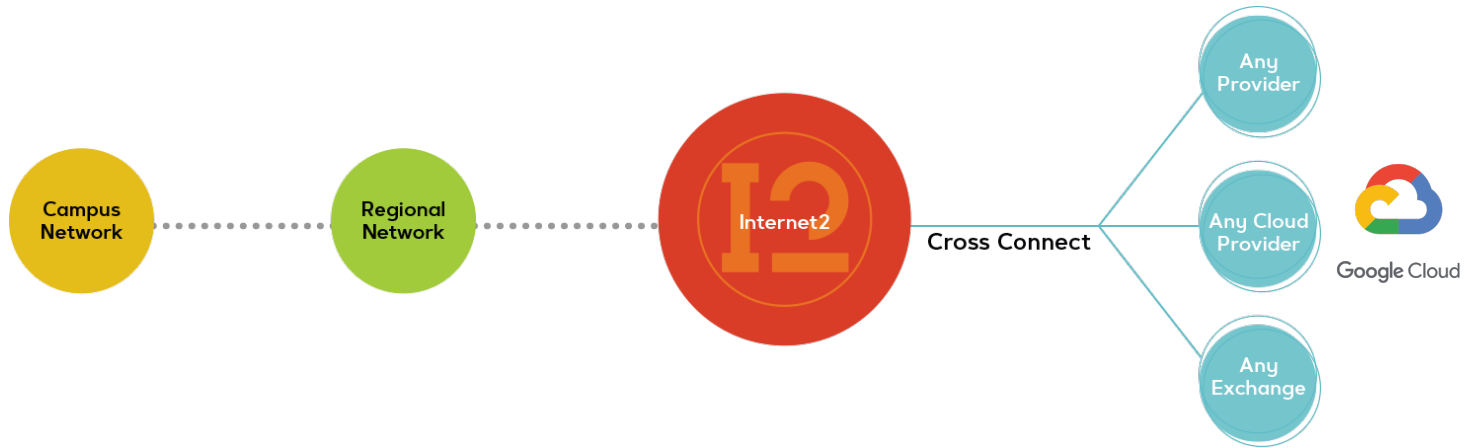
RPI can be used to provide private direct connects to any provider with some examples being 10G connections to SIP service providers, esports exchanges, or Oracle Cloud.



# Flexible Connections to Any Provider

## Internet2 Rapid Private Interconnect I2RPI

- StateNET members can use RPI for private 10G direct connections to ANY commercial service provider at major peering points
- StateNET members can use RPI for private 10G direct connections to Amazon Direct Connect, Google Cloud Interconnect, or Microsoft Azure ExpressRoute Direct services
- StateNET members can connect at Layer 2 or Layer 3
- Available to StateNET members today at an additional annual fee



# Getting to the Cloud



Google Cloud

## Internet2 Peer Exchange

### I2PX

Use of the community's existing 3Tbps of peering capabilities to the major cloud providers for access to cloud SaaS services (e.g. Zoom or Office 365)

## Internet2 Cloud Connect

### I2CC

Enables StateNET members to use the Internet2 and StateNET infrastructure to obtain up to 5Gbps of "direct-connect" private Layer 2 and Layer 3 access to Microsoft, Amazon and Google cloud platforms **at no additional fee**. Extending your data center to the cloud. (Cloud provider fees apply)

## Internet2 Rapid Private Interconnect

### I2RPI

Provides private 10G interconnections at major peering points across the country at low annual rates. Leverages current investment in StateNET and Internet2 infrastructure to reach cloud providers, for dedicated access or improved resiliency. May be used to connect to any commercial provider located at the peering point

The logo for I2Cloud, featuring the text "I2Cloud" in a bold, sans-serif font. The "I" is black, the "2" is red, and the "Cloud" is black. The "2" is stylized with a red outline. The logo is positioned in the upper left quadrant of the slide, partially overlapping a white cloud graphic.

# I2Cloud

## Networking For Cloud

If you would like additional information about ANY of our Networking for Cloud solutions, please contact us at:

[cloudconnect\\_request@internet2.edu](mailto:cloudconnect_request@internet2.edu)

# Agenda

- Welcome
- Managing Identity and Billing in GCP, GCP's relationship with GSuite
- Network Integration for GCP
- Q&A

## Please tell us how we did today!

- Take our survey:
  - <https://bit.ly/ManagingGCPCampus>

## Want to follow up with one of our speakers?

**John Bailey, [jwbailey@wustl.edu](mailto:jwbailey@wustl.edu)**

Manager of Cloud Services

Washington University in St. Louis

**Bob Flynn, [reflynn@iu.edu](mailto:reflynn@iu.edu)**

Manager of Cloud Technology Support

Indiana University

**George Loftus, [gkloftus@internet2.edu](mailto:gkloftus@internet2.edu)**

Associate Vice President, Network Services

Internet2

**Linda Roos, [lroos@internet2.edu](mailto:lroos@internet2.edu)**

Sr. Director, Service Implementation & Retention

Internet2

**Oren Sreebny, [osreebny@internet2.edu](mailto:osreebny@internet2.edu)**

Consultant, Internet2 Cloud Programs

Internet2