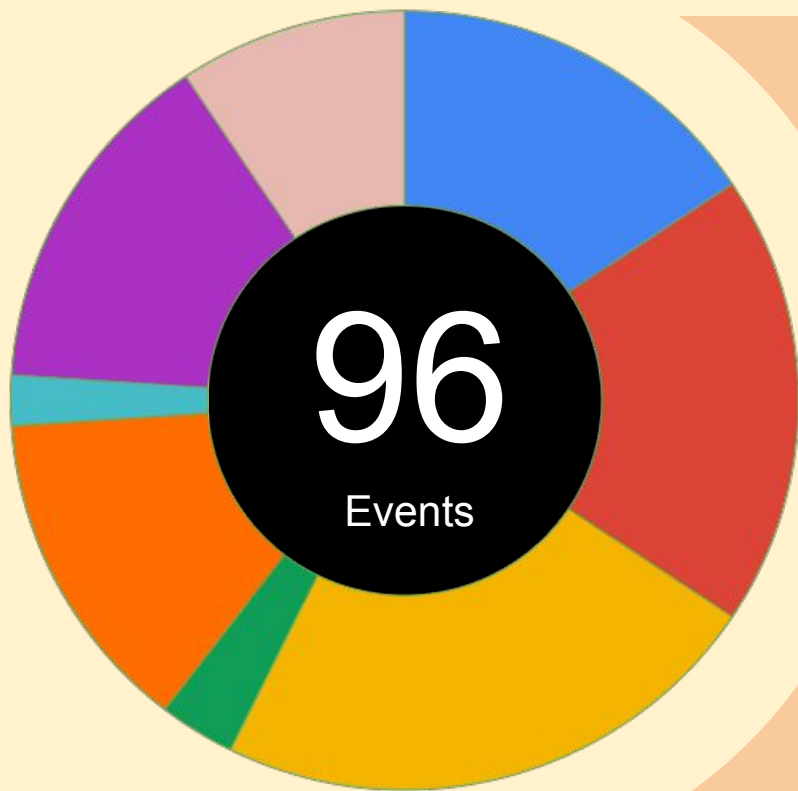


Itana 2017-2018 Year In Review

700+ Subscribers • 96 Meetups • 7 Connections • 4 Working Groups • 1 Book Club
And one great community!



Community Connections

The groups that joined Itana calls and working groups.

CAUDIT

Architecture
Community

Diversity, Equity & Inclusion
Constituent Group

EDUCAUSE

Digital Transformation
Taskforce

IT Service Management
Constituent Group

Community Building

Best Practices

Young Professionals
Constituent Group

Internet2

Internet of Things

Meetups

22

Bi-Weekly Conference Calls

Led by the Itana Steering Committee

14

Steering Committee Calls

Led by Jim Phelps, University of Washington

3

Itana Book Club

Led by J.J. DuChateau, U. W. - Madison

2

Face2Face Meetings

Led by the Steering Committee

Working Groups

18

API Working Group

Led by Ashish Pandit, UC San Diego

15

EA Maturity Model for Higher Ed WG

Led by Louis King, Yale University

13

Business Architecture Working Group

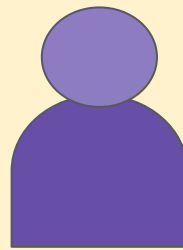
Led by Dana Miller, Miami University

9

Enterprise IoT Working Group (w/ Internet2)

Led by Ken Klingenstein, Internet2

725 Subscribers
31 New Subscribers - First 6 Months 2018
56 International Subscribers



Subscribers from 12 Countries
31 unique .com enterprises
293 unique .edu institutions

Hot Topics

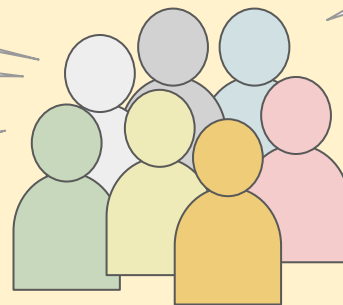
Using Strengthsfinder for personal and group leadership

EDUCAUSE Top 10 List - what is top of mind?

Cloud Journey at Cornell's Medical College

Tools to help you plan for the Internet of Things on your campus

Case studies of applying the Itana methods



20+ presenters

Business Architecture to create an organizational identity

Building and supporting diversity and equity on campus

The shifting role of Enterprise and Business Architecture

Deliverables

[Campus Internet of Things \(IoT\) Briefing Document](#)

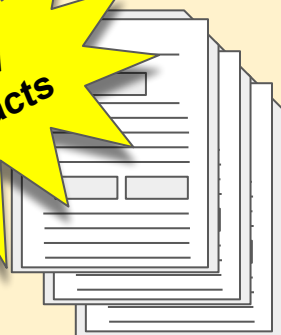
[Draft Enterprise Lifecycle IoT Checklist](#)

[EA Maturity Model](#)

[EA Practice Maturity Assessment Tool](#)

[Strategy on Page Architecture Method](#)

New Artifacts



?

Contact the Itana Steering Committee
<http://itana.org>

Itana is supported by [EDUCAUSE](#) and [Internet2](#).
All content covered by the [Internet2 Intellectual Property Policy](#).
V2.0 by Jim Phelps. 2018-07-13