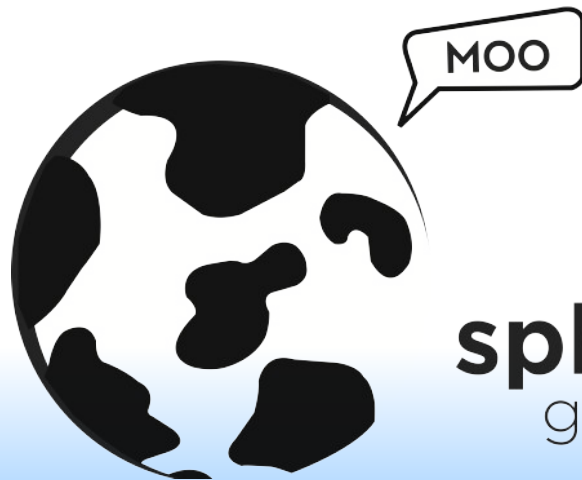


COmanage: An Introduction


Benjamin Oshrin

January 2018 • Campus Success



spherical cow
group

What Is COmanage [Registry]?

-  COmanage™ Is The Project
- Registry Is The Product
 - (Like “Shibboleth” and “IdP”)
 - A Person* Registry: A place to store information about people associated with your organization
 - *also groups, departments, email lists, services, authenticators, and some other things
 - Enrollment, Lifecycle, and Attribute Management
 - Complex representations of people with multiple components to their identity



COmanage History

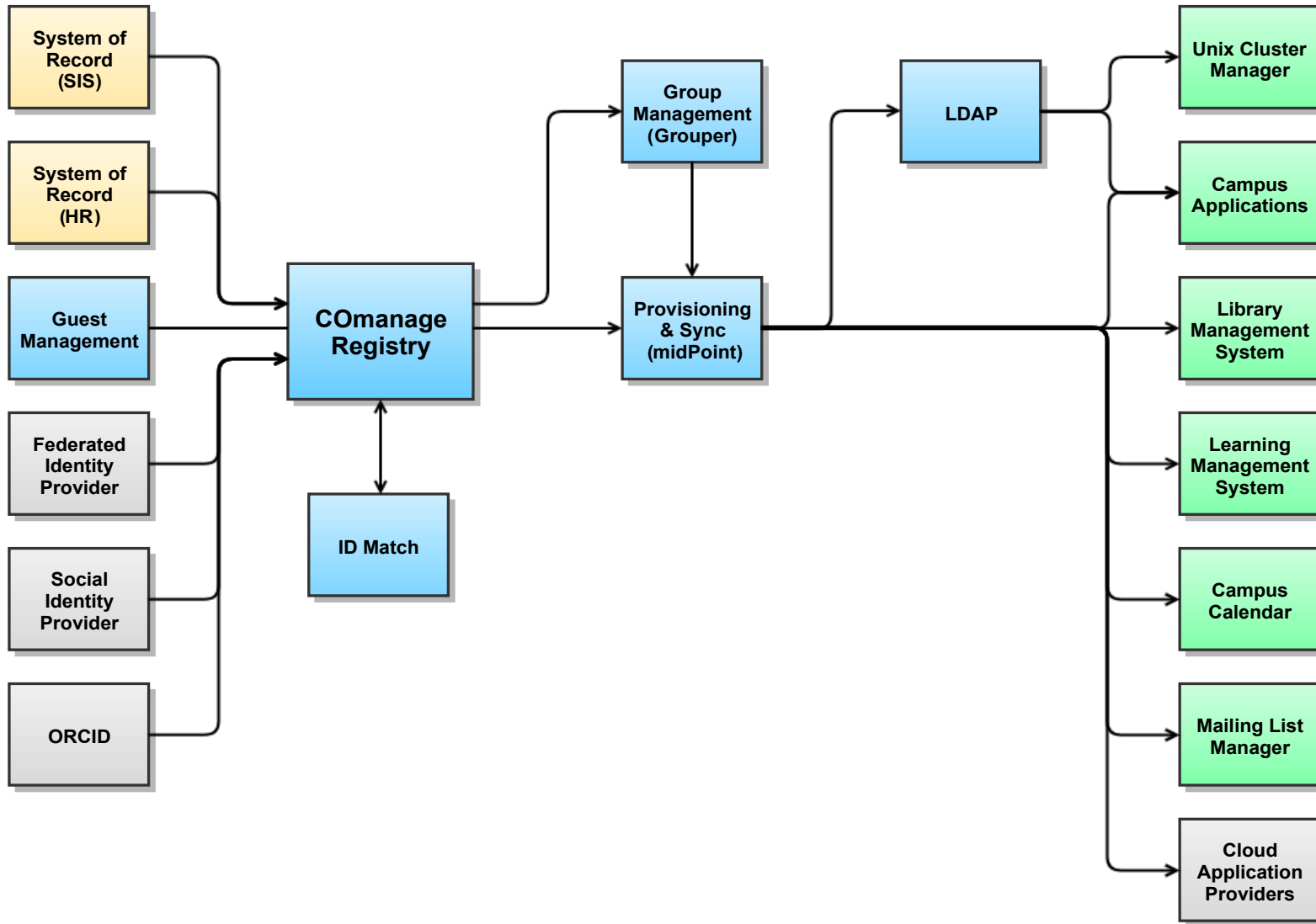
- Originally funded by NSF / Internet2 for Virtual Organizations (obLIGO)
 - *Turns out, VO Identity needs are similar to Institutional Identity needs*
- As adoption grows, contributions are too (financial, patches, bug reports, etc)
 - CILogon (NSF), CTSC (Indiana University), GÉANT, Lafayette, MLA (Mellon), NIH/NIAID (NETE), SUNET, SURFnet, etc

What Can You Do With COmanage Registry?

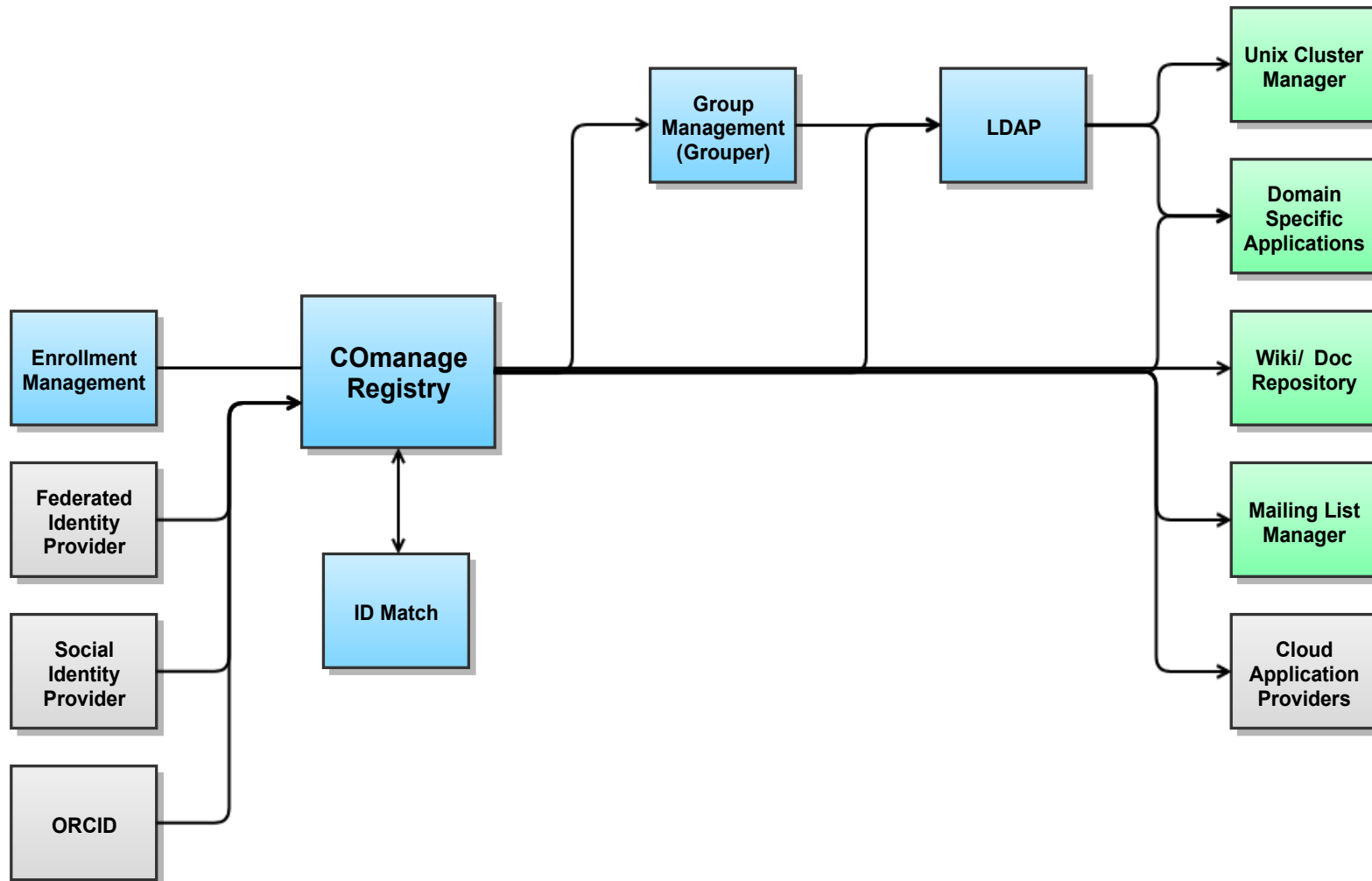
- Virtual Organization / Collaboration Management
- Guest / Non-Traditional Population Management
- University Identity Registry

**Some Integration Work May Be Required*

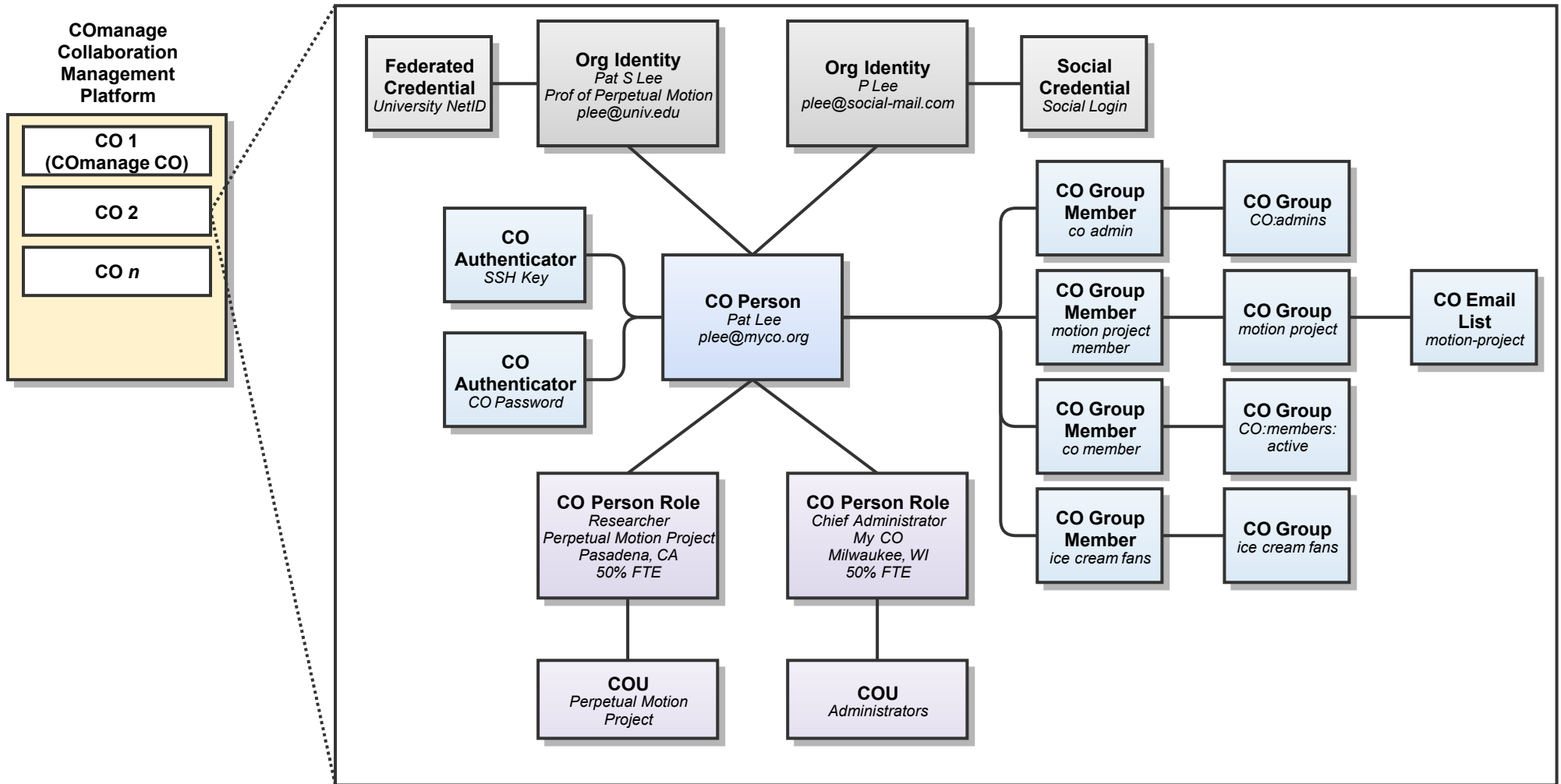
Institutional Component Architecture



VO Component Architecture



Registry Person Model



Registry Capabilities

- Most non-core features are designed to provide common capabilities out of the box, but allow replacement or integration with more comprehensive products, eg:
 - Group Management → Grouper
 - Provisioning → (eg) midPoint
- UI driven configuration and operation
- REST API

Registry Capabilities

- Person & Role Attribute Management
 - Normalization
 - Attribute Enumerations
 - Multi-valued Names, Addresses, Email Addresses, etc
- Identifier Assignment and Management
 - Pattern based sequential or random identifier assignment
 - Tracking of external (non-Registry) identifiers
- Population Organization
 - COUs & Departments
 - Basic Group Management

Registry Capabilities

- Self Service & Delegated Enrollment & Lifecycle Management
 - Enrollment Flows
 - Early Onboarding
 - Duplicate Management / Relinking
 - Sponsors
 - Expiration Policies
 - Basic Matching **more to come*
 - Terms & Conditions
- Human Readable Transaction History
 - Person / Group / Email List / Petition
- Database Level “Changelog” (Copy-On-Write)



Registry Capabilities: Organizational Identity Sources

- Plugin based mechanism for creating records from external sources
 - Env
 - File
 - LDAP
 - NetFORUM
 - ORCID
 - Salesforce
 - ...



Registry Capabilities: Provisioners

- Plugin based mechanism to provision directly to supported services
 - Changelog
 - GitHub
 - Grouper
 - LDAP
 - Mailman
 - MediaWiki
 - Salesforce **in development*
- Or link up to message bus or provisioning system



Registry Capabilities: Authenticators

- Plugin based mechanism for credential management
 - SSH Keys*
 - Service Tokens*
 - **Existing implementation is not yet plugin based*
 - Certificates
 - Passwords
- Current implementation is “beta”



Registry Extensibility & Customization

- Plugins
 - Authenticator
 - Enrollment Flow
 - Identifier Validation
 - Invitation Confirmer
 - LDAP Schema
 - Normalization
 - Organizational Identity Source
 - Provisioner
 - Generic



Registry Extensibility & Customization

- Extended Attributes
- Extended Types
 - eg: eduPersonAffiliation ↔ localPersonAffiliation
- UI Themes
- I18n and L10n



But... does it *scale*?

- Short Answer: Yes, to University scale
- Largest known production deployment O(10k)
- Largest known test deployment O(500k)
- Some rough edges still need smoothing



Product Roadmap

- Registry v3.1.0 at RC2, final release any day now
- Registry v3.2.0 due 2Q18 (funded)
 - ID Match via API
 - voPerson
 - Dashboards
- Registry v4.0.0 (tbd)
 - Framework Migration



More Info

- Wiki
 - <https://spaces.internet2.edu/display/COmanage>
 - Technical Documentation
 - Data Model
 - <https://spaces.internet2.edu/display/COmanage/Email+Lists>
- Git
 - <https://github.com/Internet2/comanage-registry>
- TIER Packaging
 - <https://spaces.internet2.edu/display/TPD>
 - Docker

